

**Detailed Results of the Modelling of the Impacts of
Emissions Trading on the Electricity Markets**

December 2008



Project Team

Walter Gerardi

Alison Demaria

Melbourne Office

242 Ferrars Street
South Melbourne Vic 3205
Tel: +61 3 9699 3977
Fax: +61 3 9690 9881

Email: mma@mmassociates.com.au
Website: www.mmassociates.com.au

Brisbane Office

GPO Box 2421
Brisbane Qld 4001
Tel: +61 7 3100 8064
Fax: +61 7 3100 8067

Canberra Office

5 Patey Street
Campbell ACT 2612
Tel: +61 2 6257 5423
Fax: +61 2 6257 5423

ACN: 004 765 235
ABN: 33 579 847 254

AMENDMENTS

In this version of the detailed results report, corrections have been made as follows:

- Queensland gas capacity added to Figure 2.4
- Wind capacity converted from firm to non-firm (total) capacity in Figure 2.6.
- Changes to brown coal generation and capacity added to charts showing changes to generation and capacity relative to the reference scenario.
- Double counting of Gas CCS removed from charts showing changes to generation and capacity relative to the reference scenario.
- Explanatory footnote added on page 1.

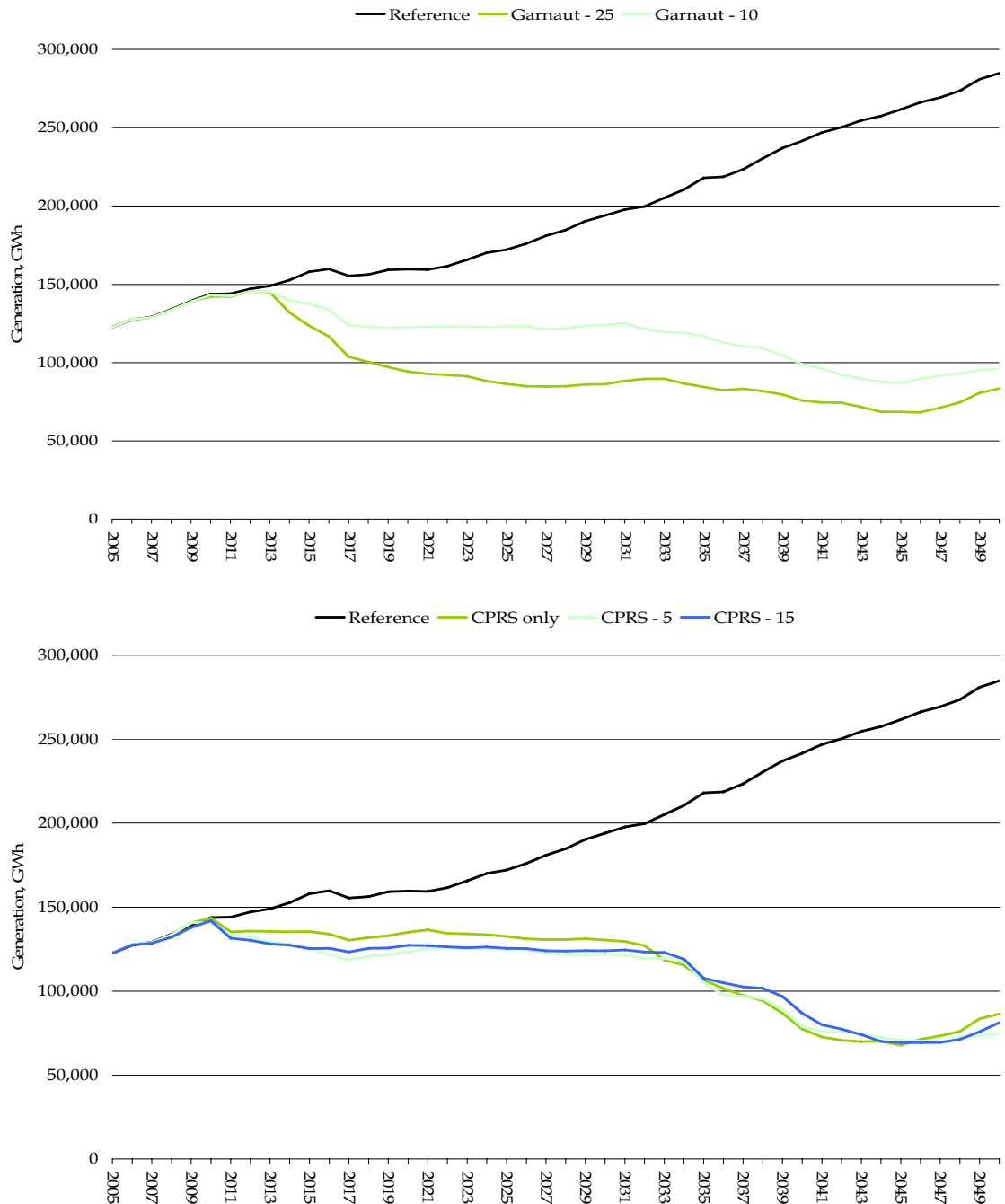
TABLE OF CONTENTS

| | | |
|----------|---|-----------|
| 1 | COMPARISON OF KEY RESULTS ACROSS ALL SCENARIOS | 1 |
| 1.1 | Generation | 1 |
| 1.2 | Capacity | 5 |
| 2 | REFERENCE SCENARIO RESULTS | 6 |
| 2.1 | Generation | 6 |
| 2.2 | Capacity | 7 |
| 3 | GARNAUT -10 SCENARIO RESULTS | 9 |
| 3.1 | Generation | 9 |
| 3.2 | Capacity | 11 |
| 4 | GARNAUT -25 SCENARIO RESULTS | 14 |
| 4.1 | Generation | 14 |
| 4.2 | Capacity | 16 |
| 5 | CPRS ONLY SCENARIO RESULTS | 19 |
| 5.1 | Generation | 19 |
| 5.2 | Capacity | 21 |
| 6 | CPRS -5 SCENARIO RESULTS | 24 |
| 6.1 | Generation | 24 |
| 6.2 | Capacity | 26 |
| 7 | CPRS -15 SCENARIO RESULTS | 29 |
| 7.1 | Generation | 29 |
| 7.2 | Capacity | 31 |

1 COMPARISON OF KEY RESULTS ACROSS ALL SCENARIOS

1.1 Generation¹

Figure 1-1: National black coal generation, GWh



¹ Please note: in this report, generation includes generation from the minor grids, embedded generation and remote power supplies as well as generation from the major grids (NEM, SWIS and DKIS). Capacity values refer only to capacity from the major grids (that is, it excludes capacity from the minor grids, remote power supplies and embedded generation, which mainly comprises gas and liquid fired capacity).

Figure 1-2: National brown coal generation, GWh

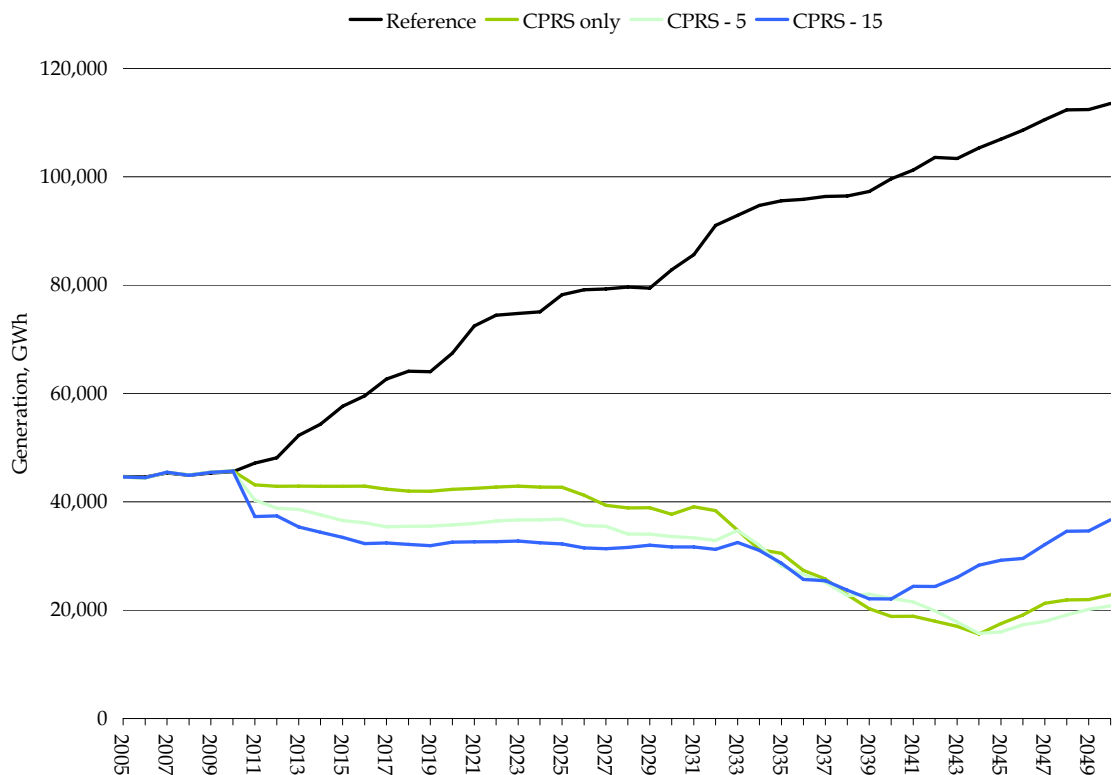
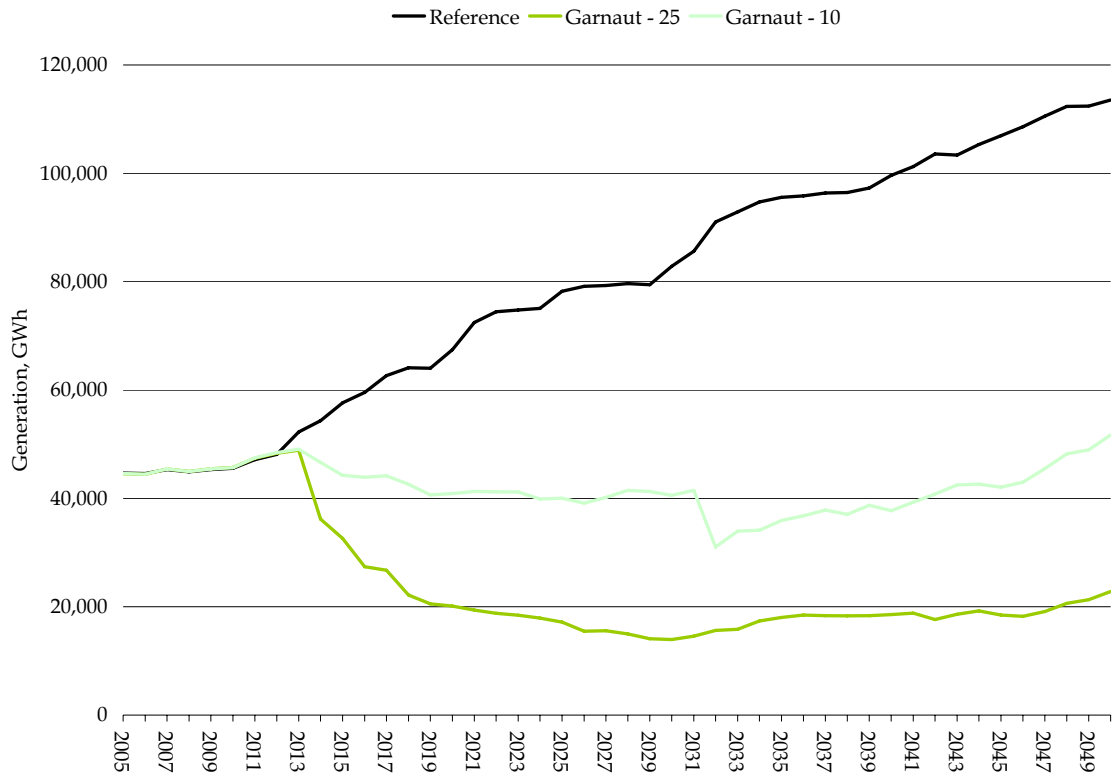


Figure 1-3: National gas generation, GWh

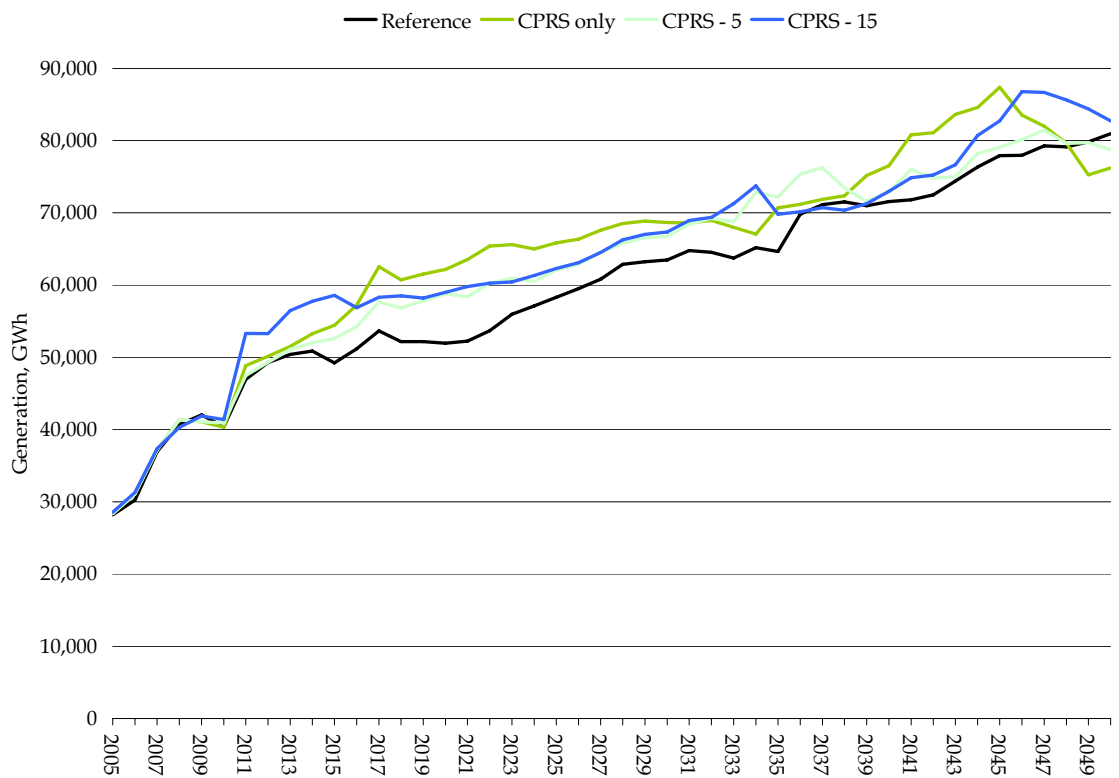
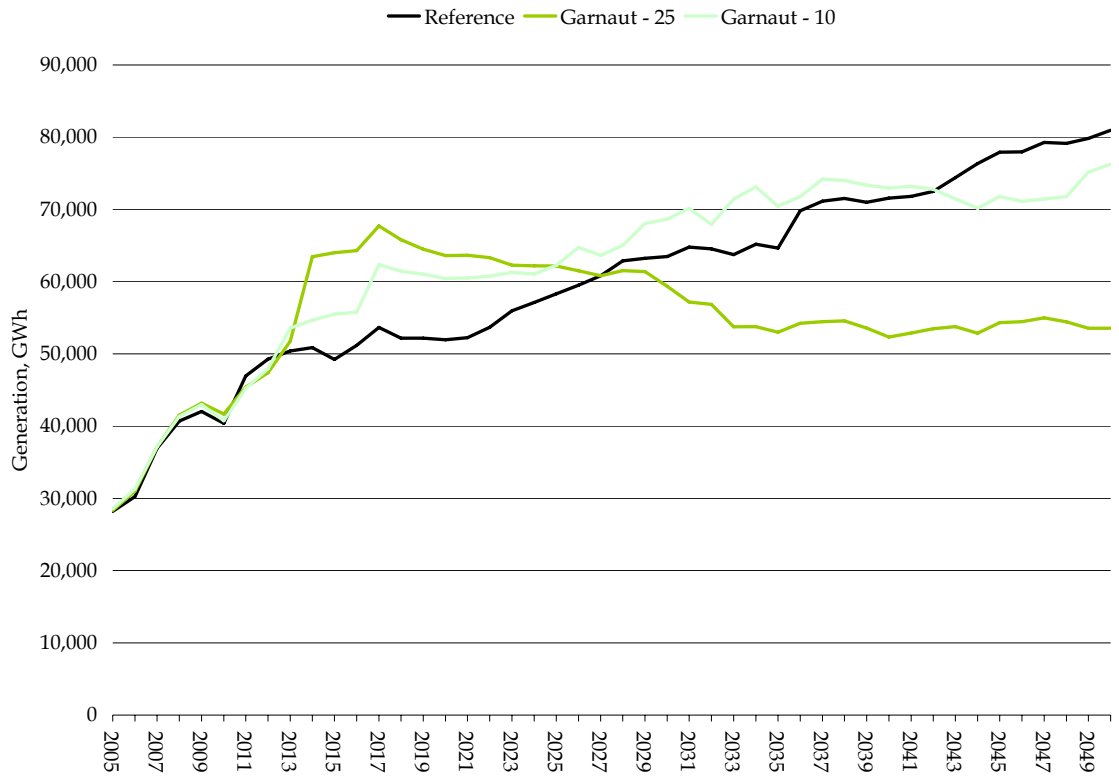
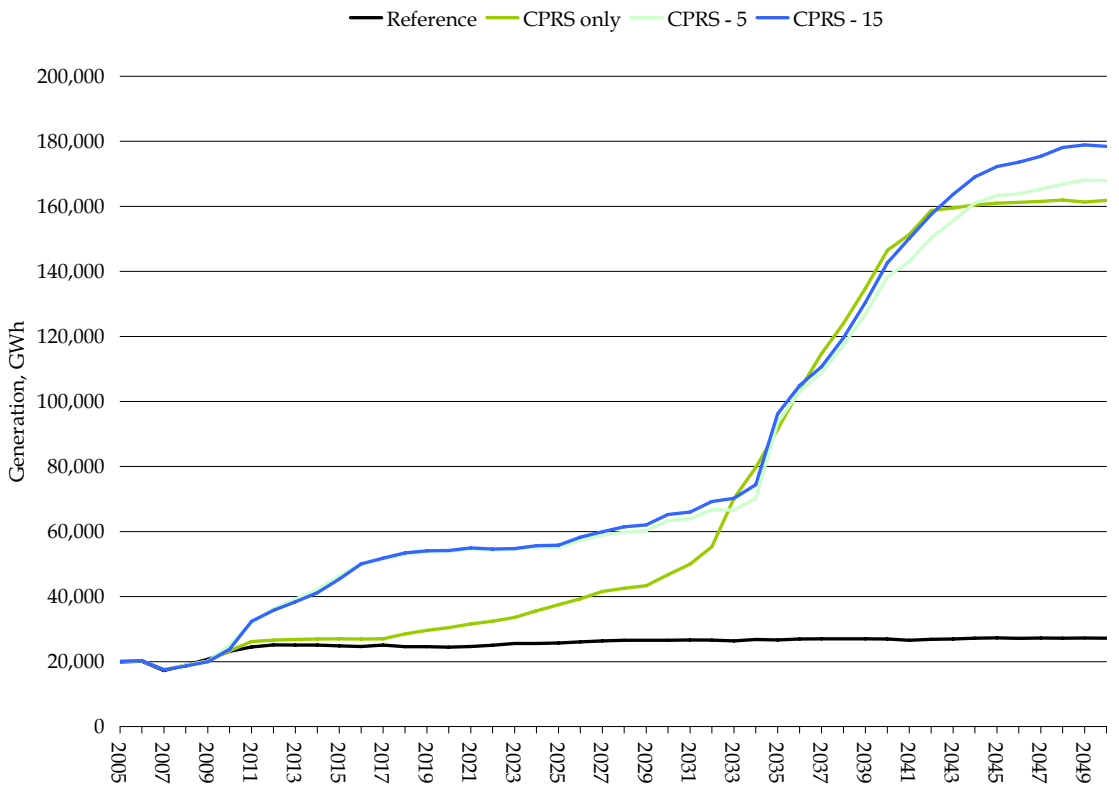
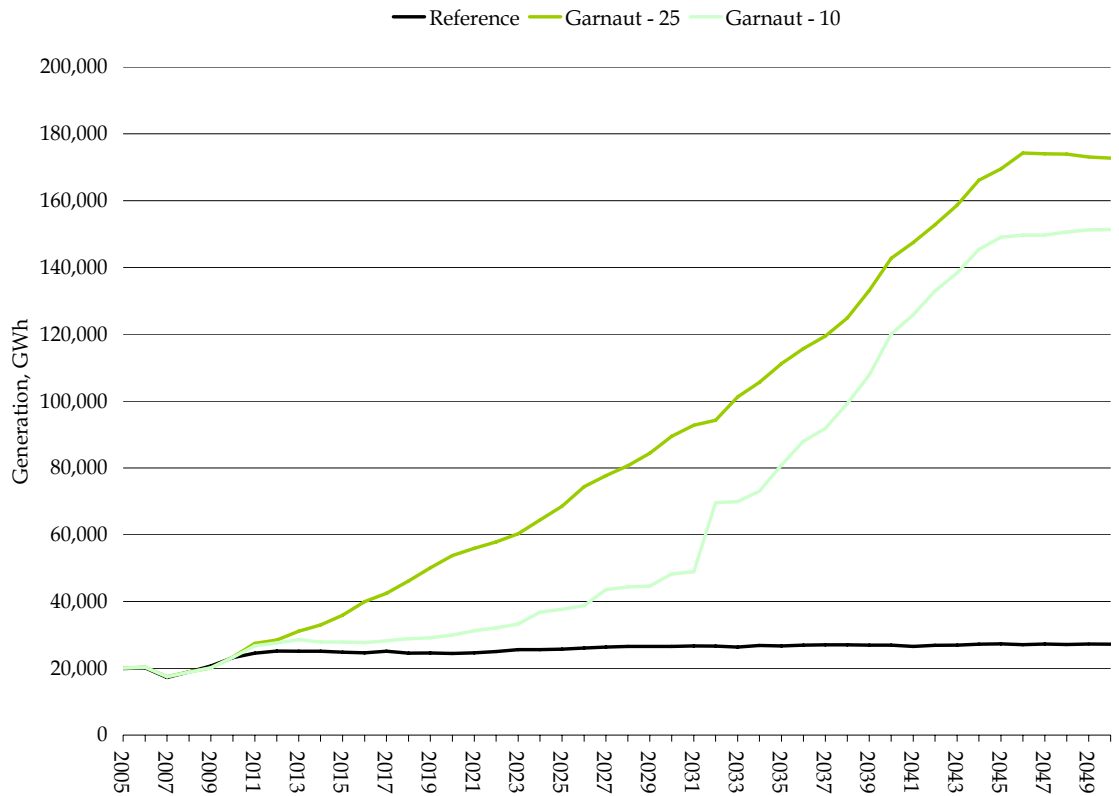


Figure 1-4: National renewable generation, GWh



1.2 Capacity

Figure 1-5: National capacity mix by technology, 2020

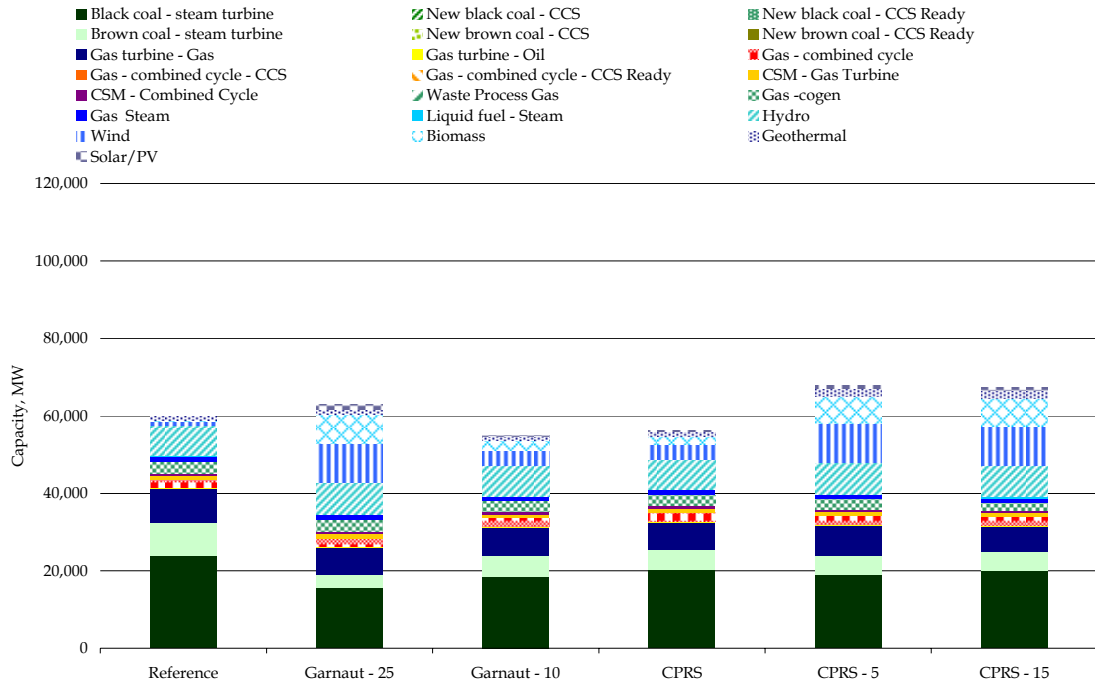
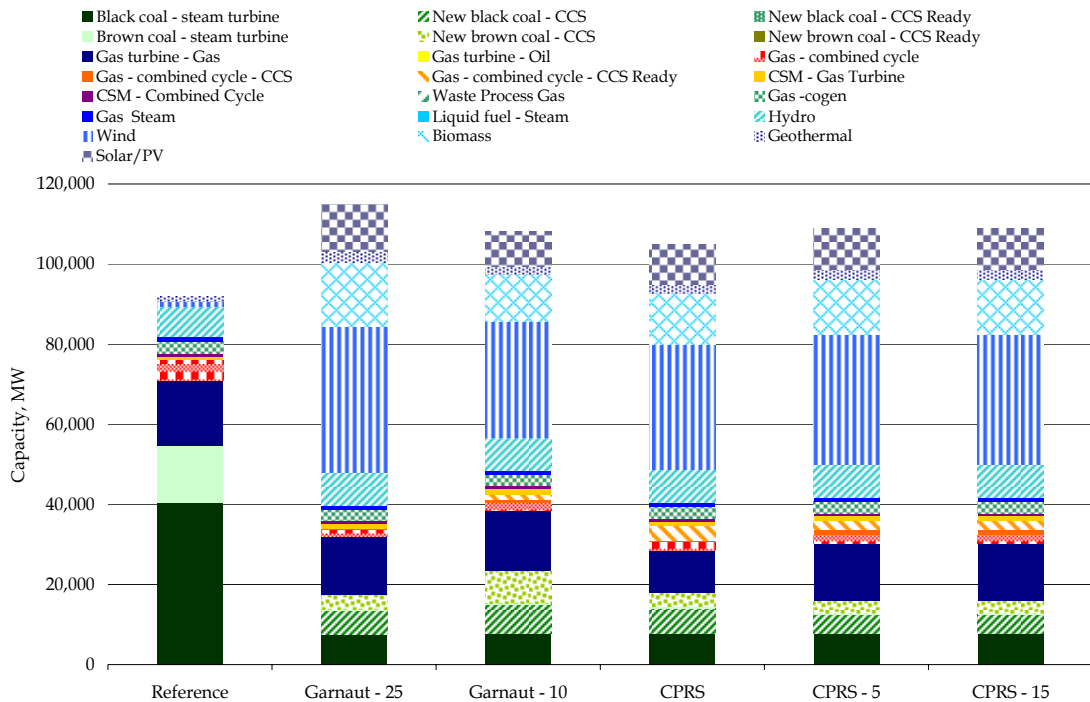


Figure 1-6: National capacity mix by technology, 2050



2 REFERENCE SCENARIO RESULTS

2.1 Generation

Figure 2-1: Coal generation, Reference case

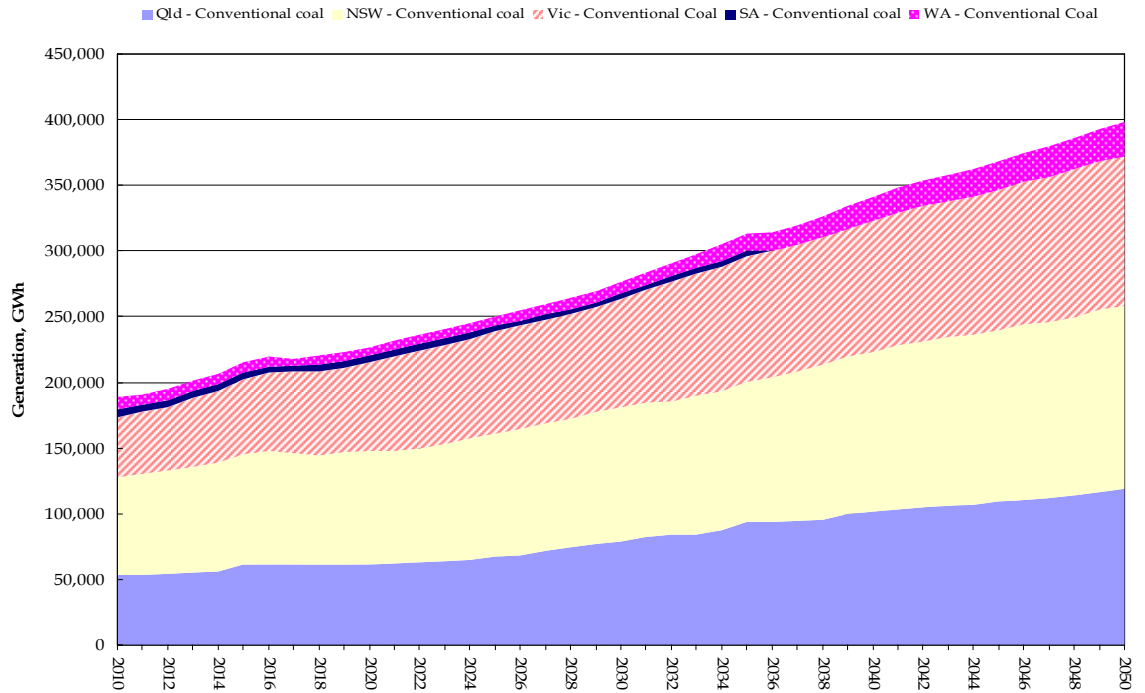


Figure 2-2: Natural gas generation, Reference Case

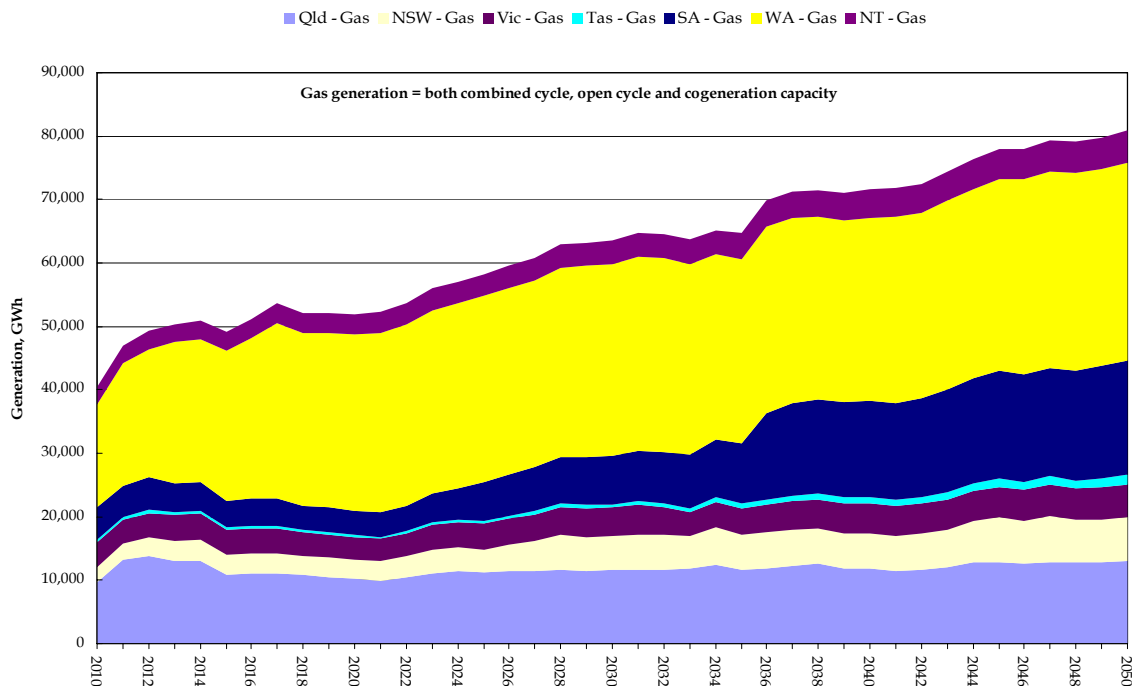
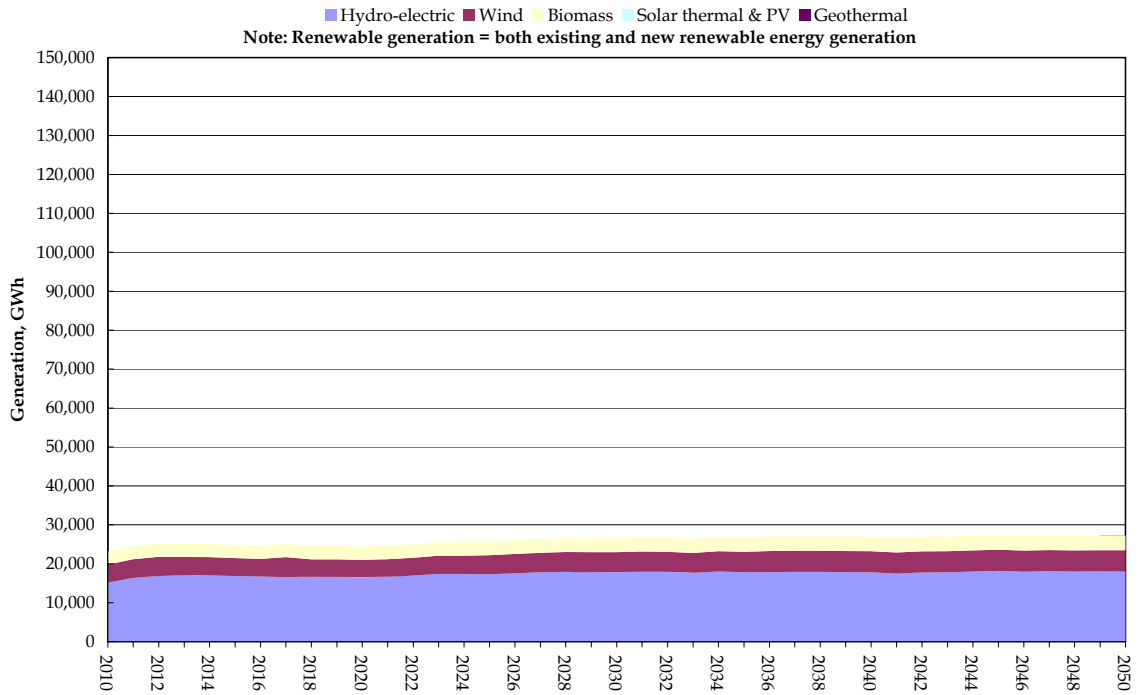


Figure 2-3: Renewable generation, Reference Case



2.2 Capacity

Figure 2-4: Coal capacity, Reference Case

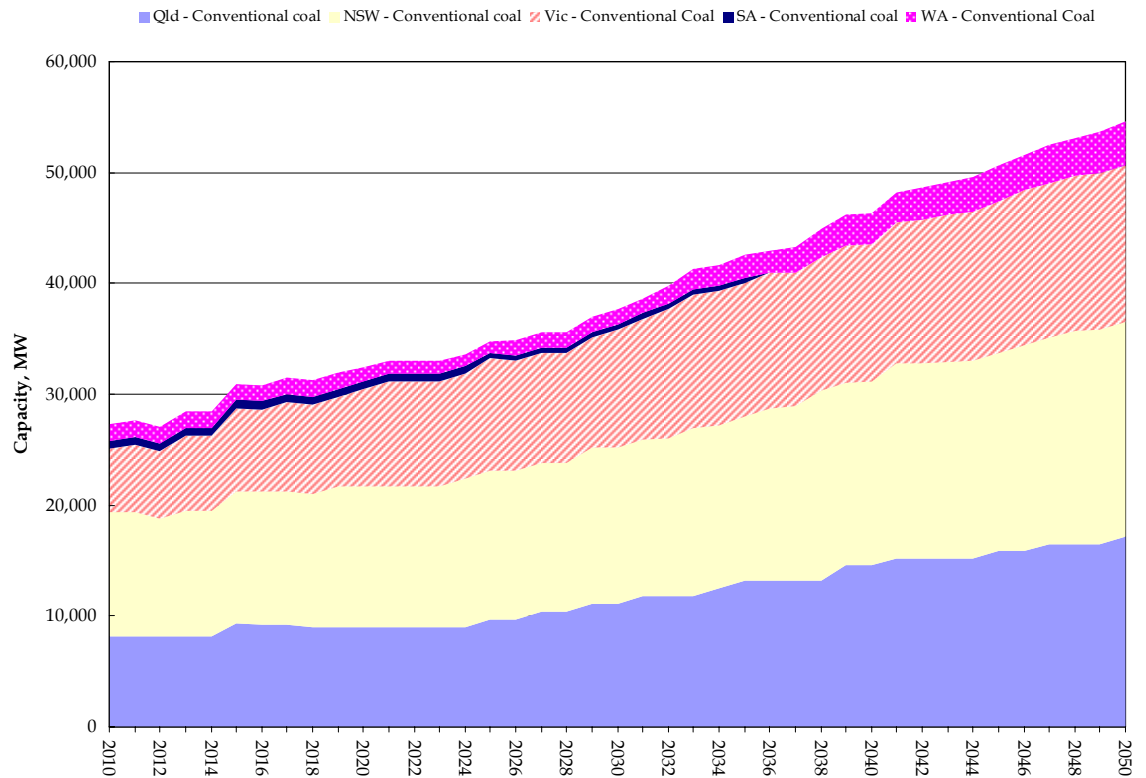


Figure 2-5: Natural gas capacity, Reference Case

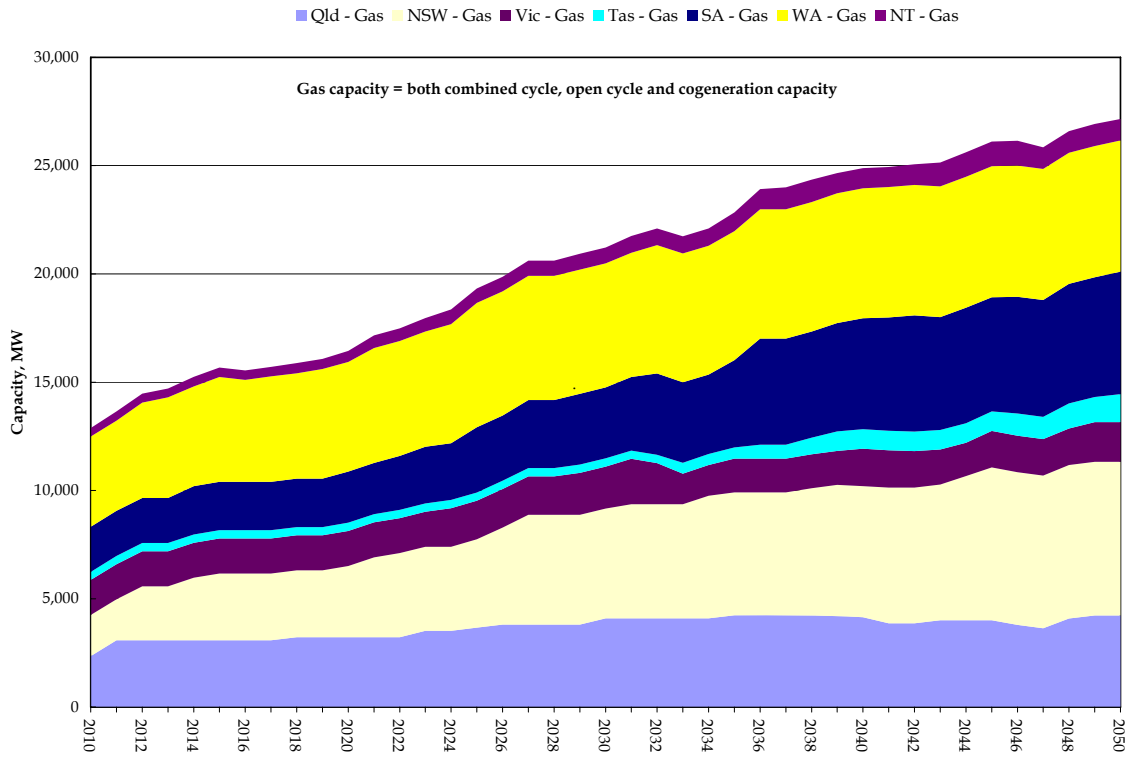
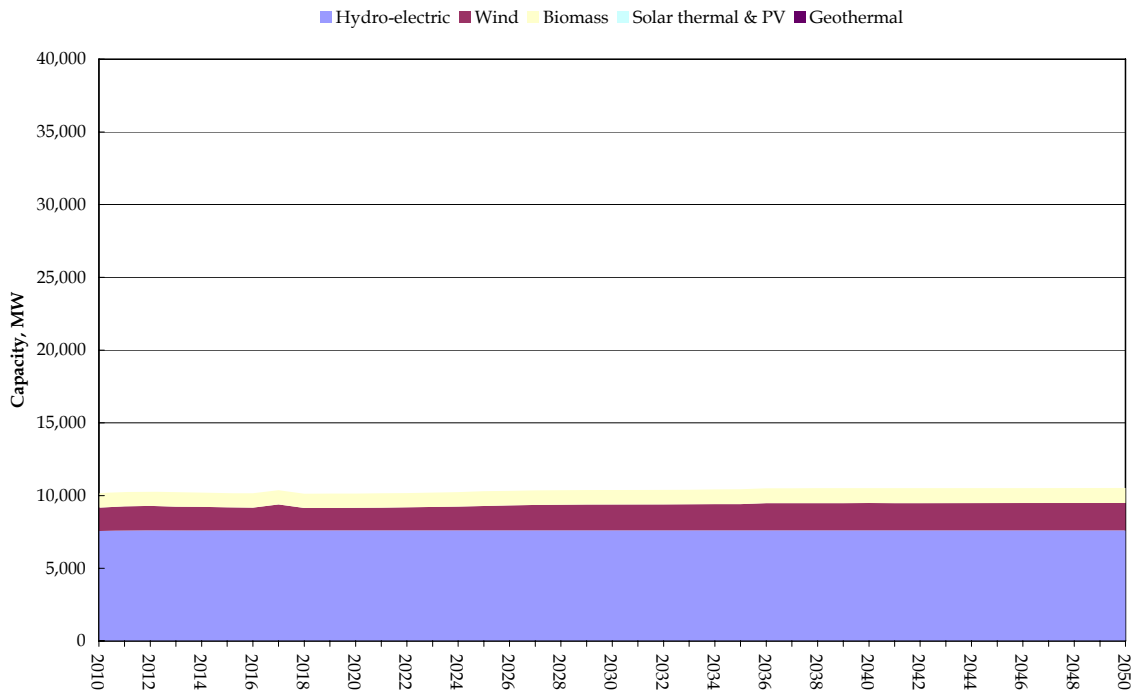


Figure 2-6: Renewable capacity, Reference Case



3 GARNAUT -10 SCENARIO RESULTS

3.1 Generation

Figure 3-1: Coal generation, Garnaut -10

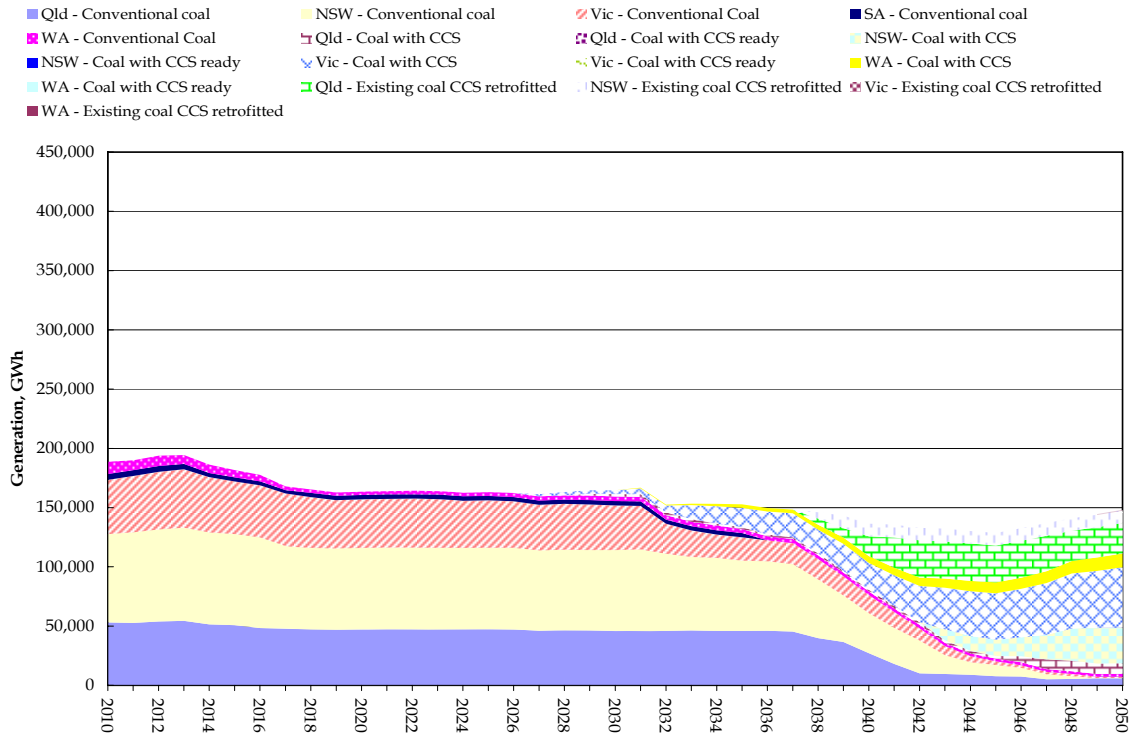


Figure3-2: Natural gas generation, Garnaut -10

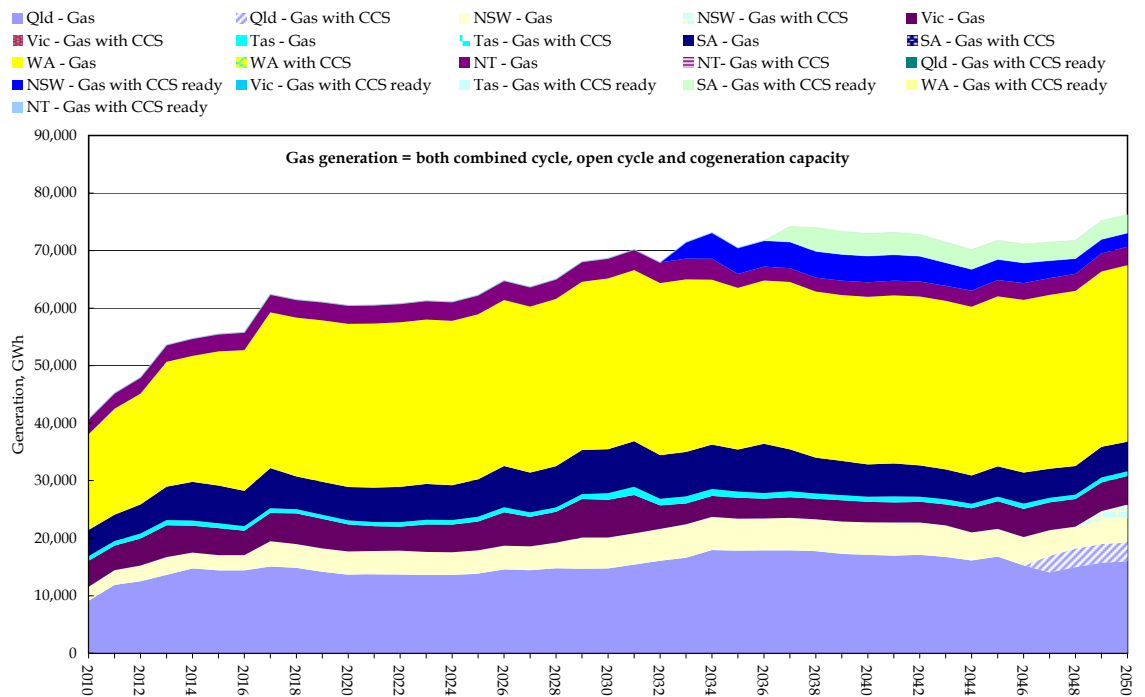


Figure 3-3: Renewable generation, Garnaut -10

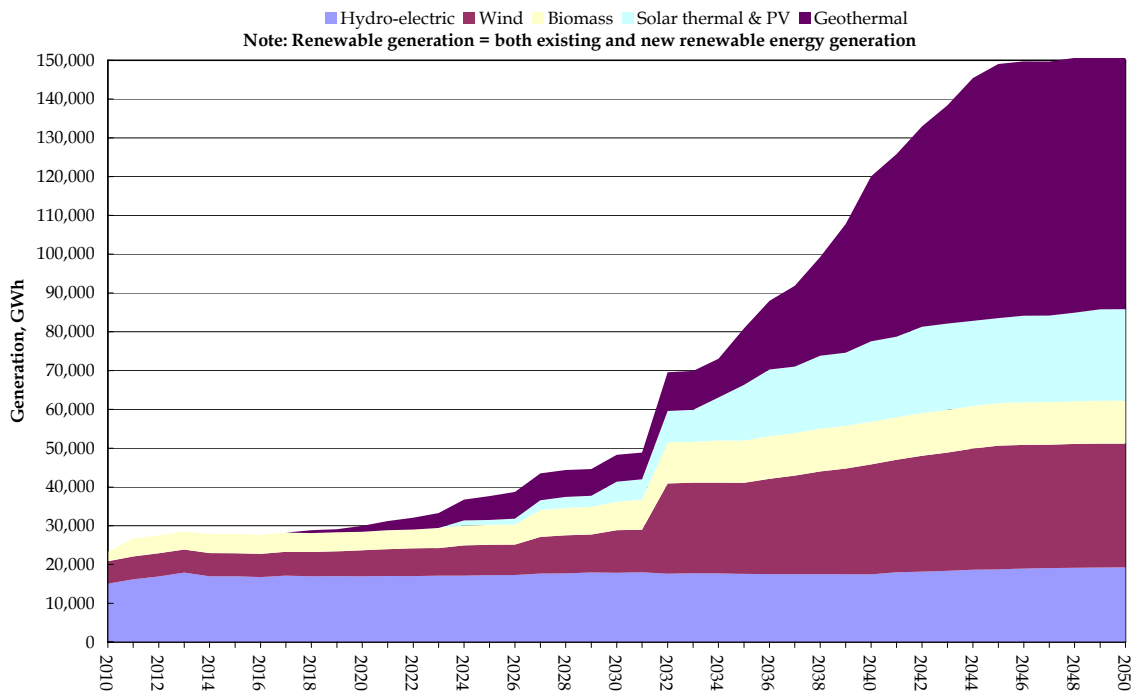


Figure 3-4: Change in generation relative to Reference case, Garnaut -10

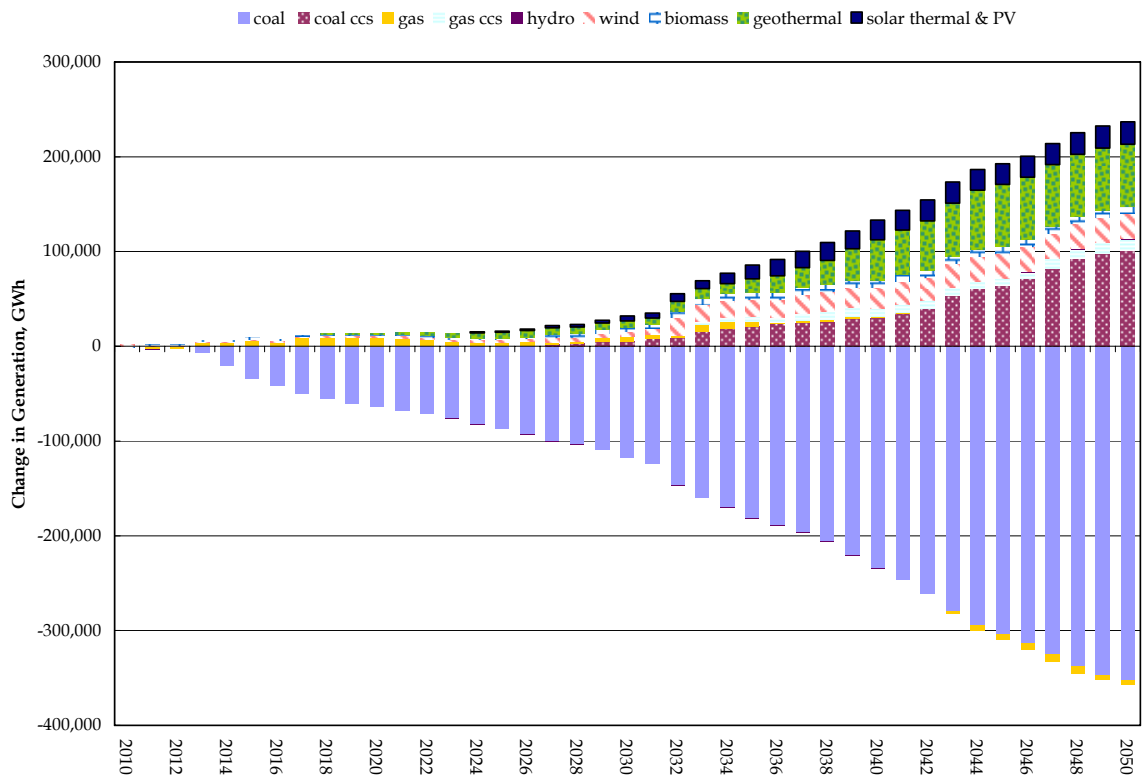
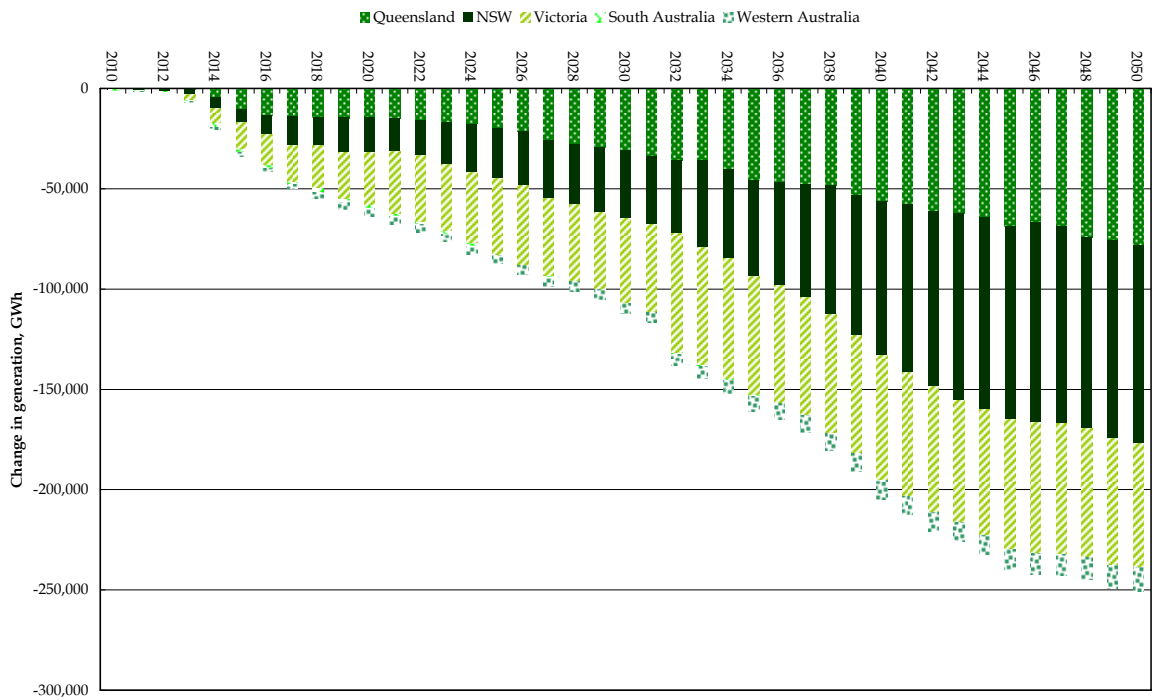


Figure 3-5: Reduction in coal generation, GWh - Garnaut -10



3.2 Capacity

Figure 3-6: Coal capacity, Garnaut -10

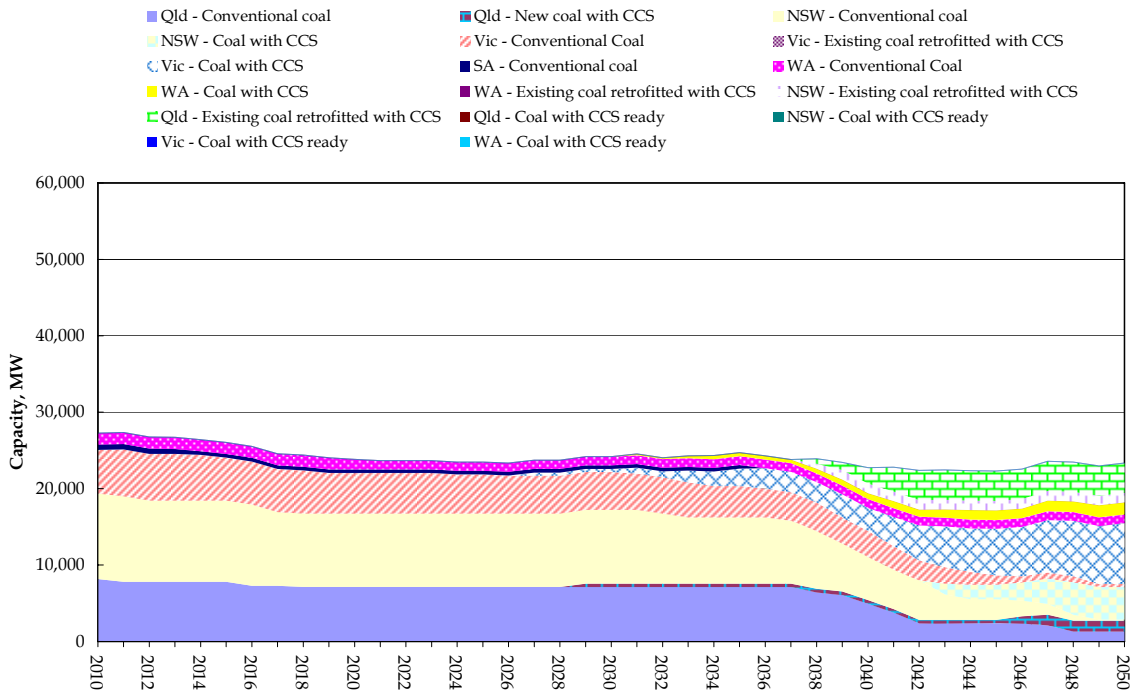


Figure 3-7: Natural gas capacity, Garnaut -10

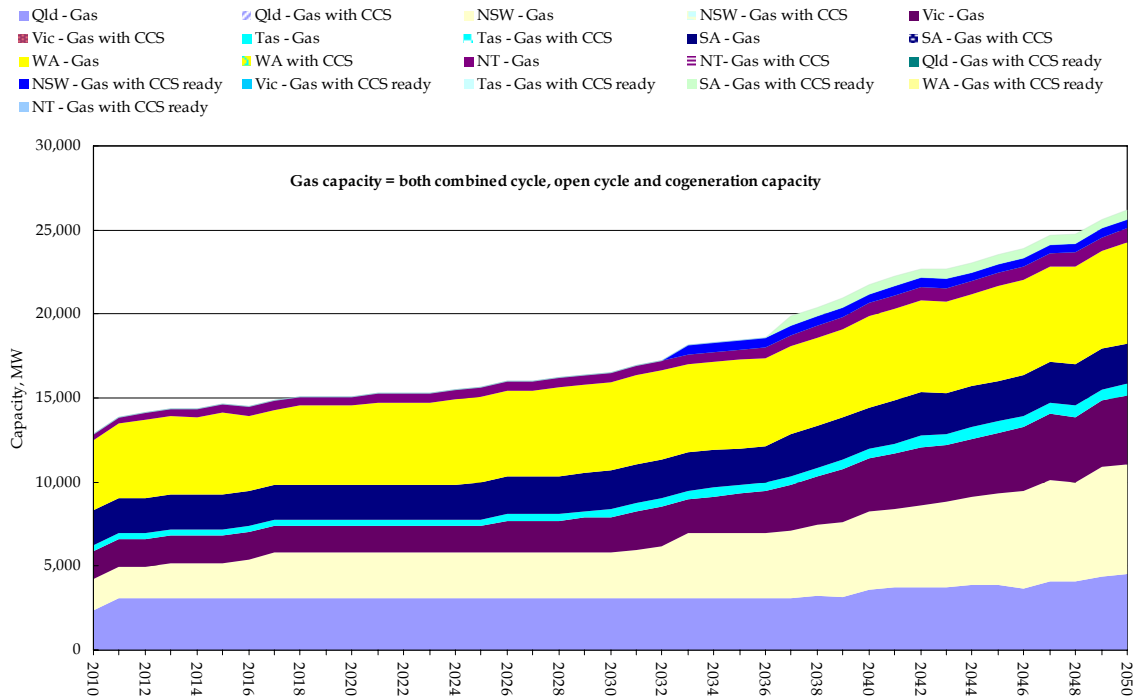


Figure 3-8: Renewable capacity, Garnaut -10

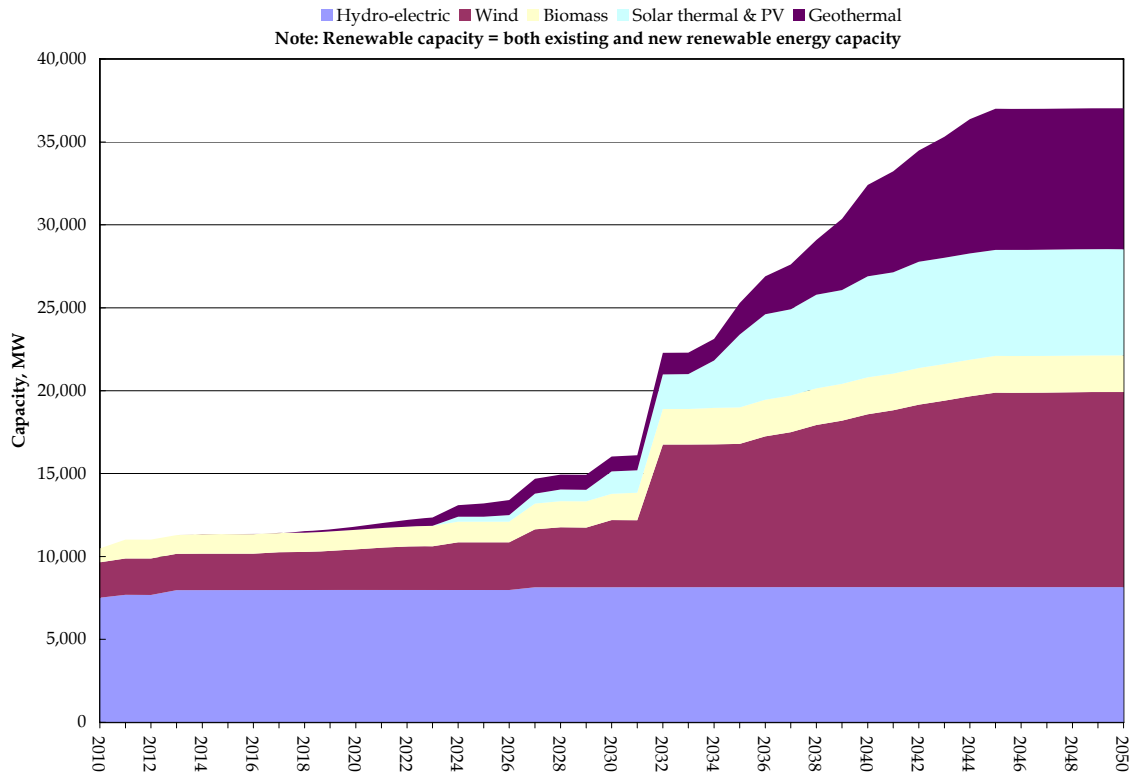
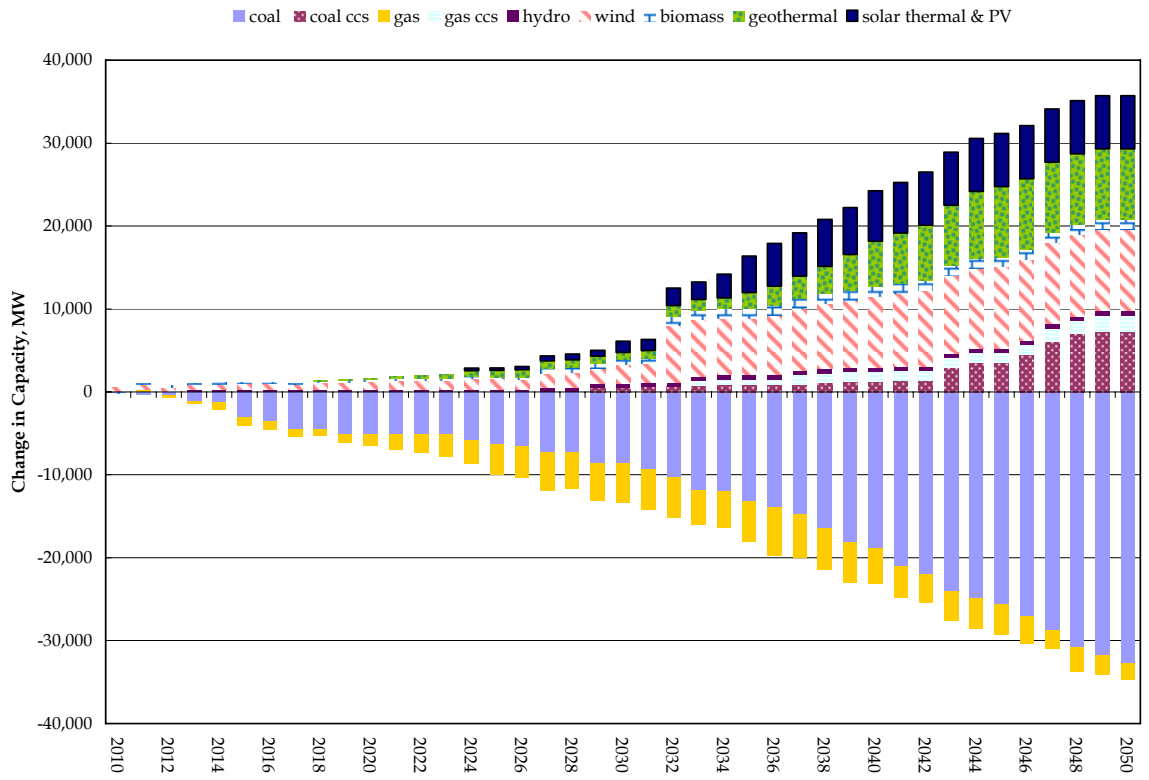


Figure 3-9: Change in capacity relative to Reference case, Garnaut -10



4 GARNAUT -25 SCENARIO RESULTS

4.1 Generation

Figure 4-1: Coal generation, Garnaut -25

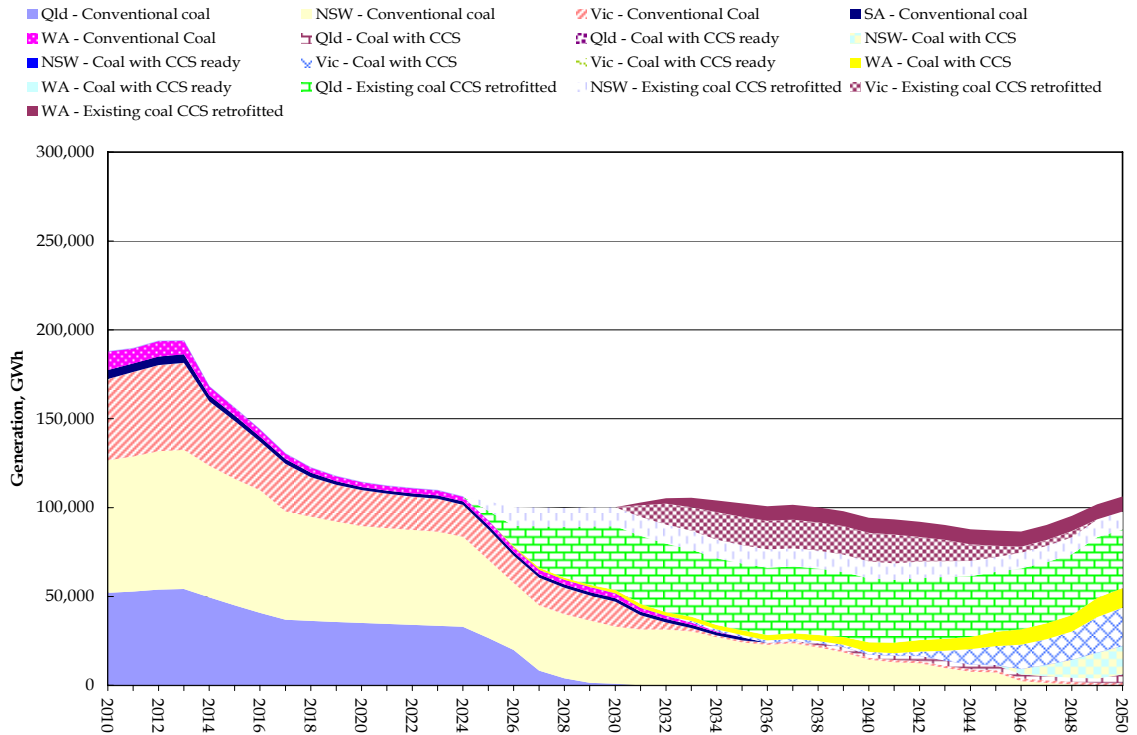


Figure 4-2: Natural gas generation, Garnaut -25

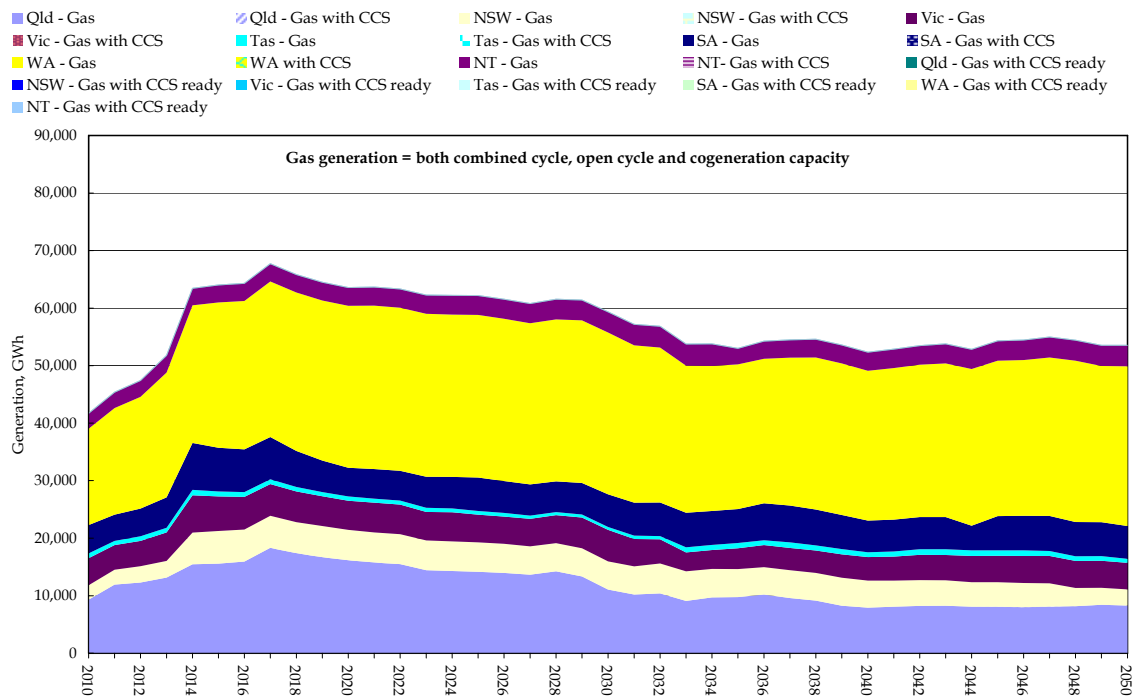


Figure 4-3: Renewable generation, Garnaut -25

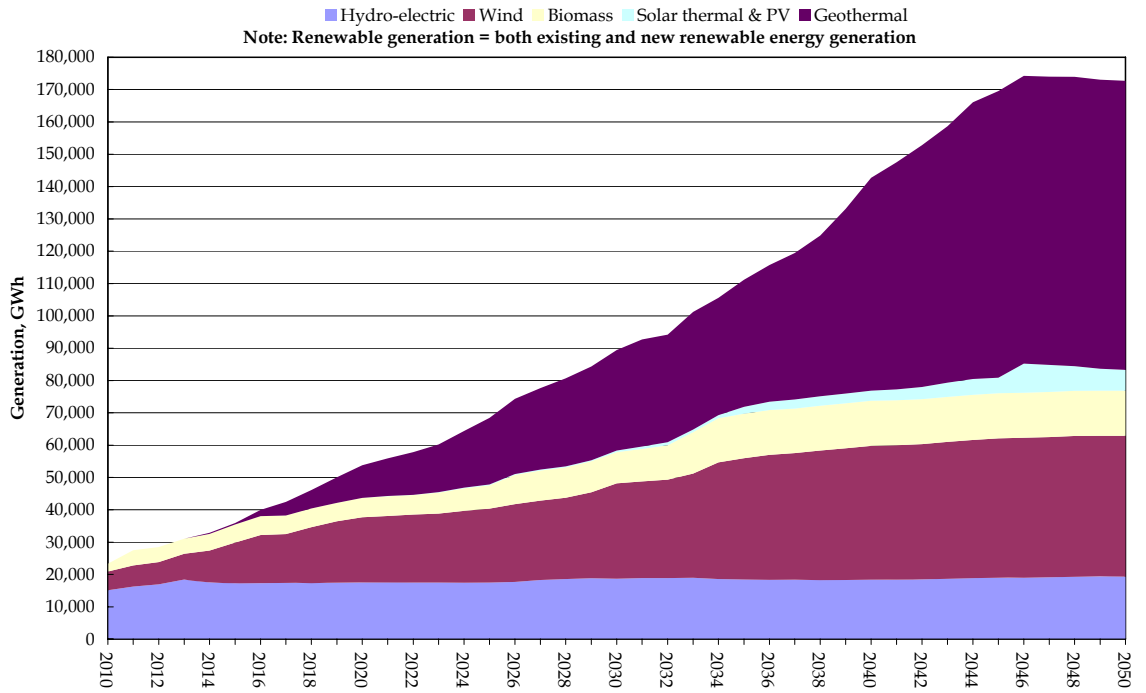


Figure 4-4: Change in coal generation by state, Garnaut -25

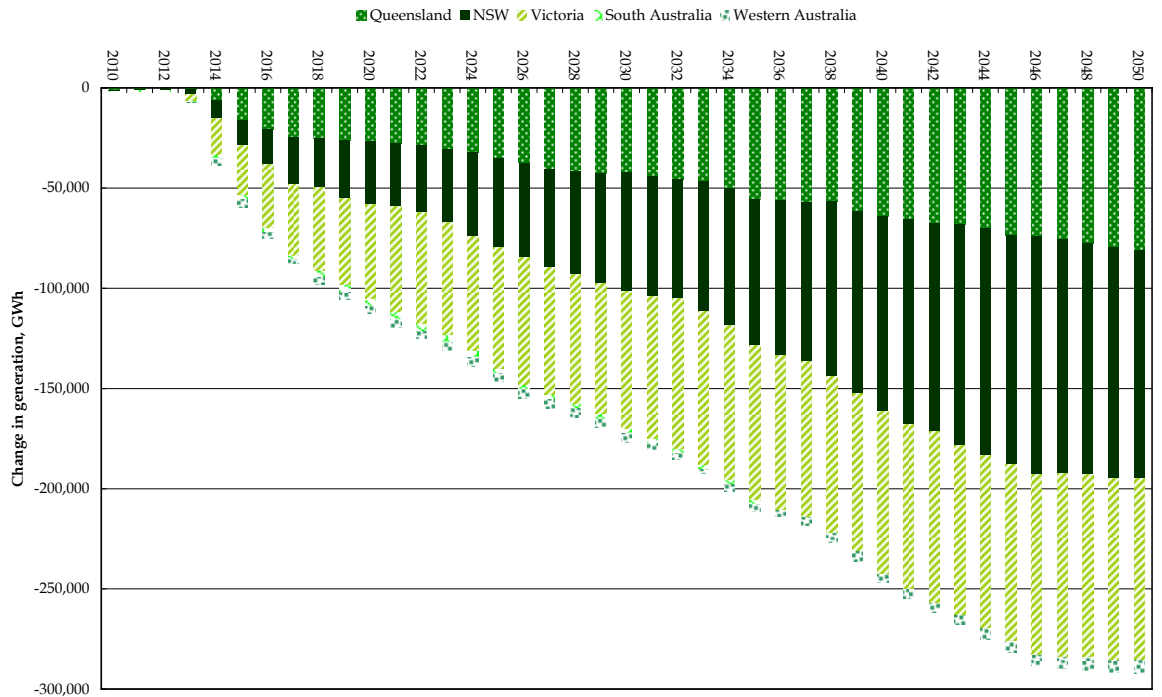
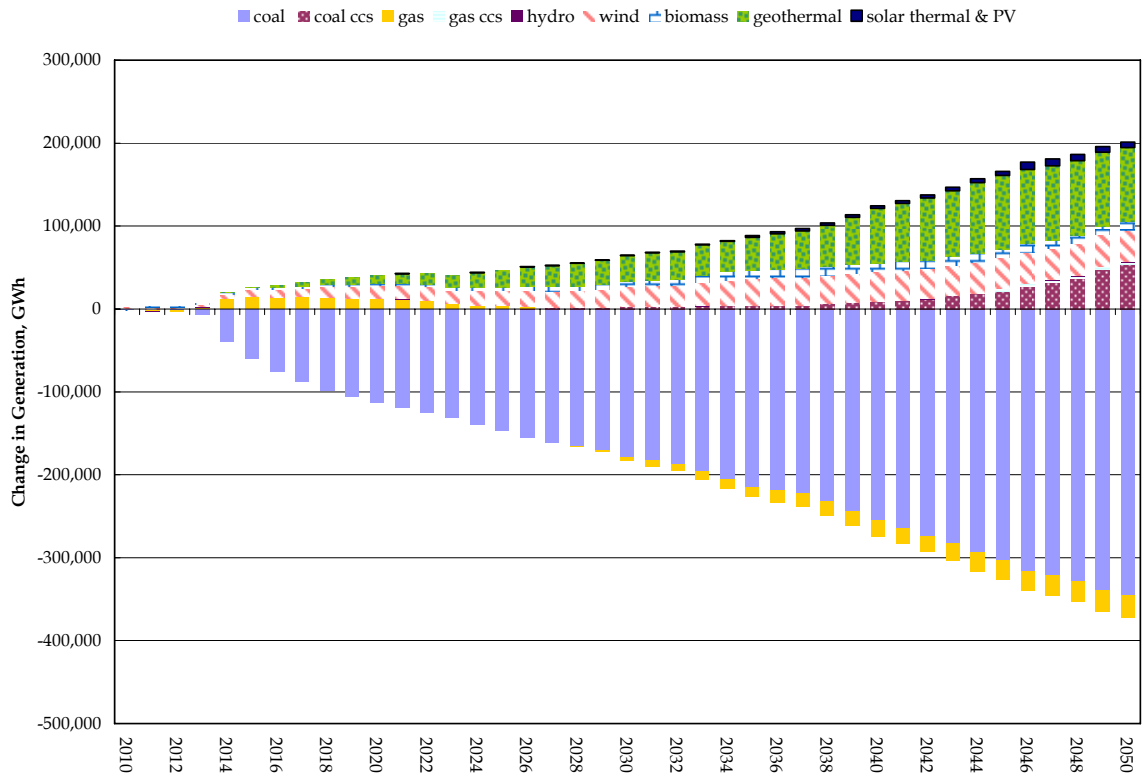


Figure 4-5: Change in generation relative to Reference case, Garnaut -25



4.2 Capacity

Figure 4-6: Coal capacity, Garnaut -25

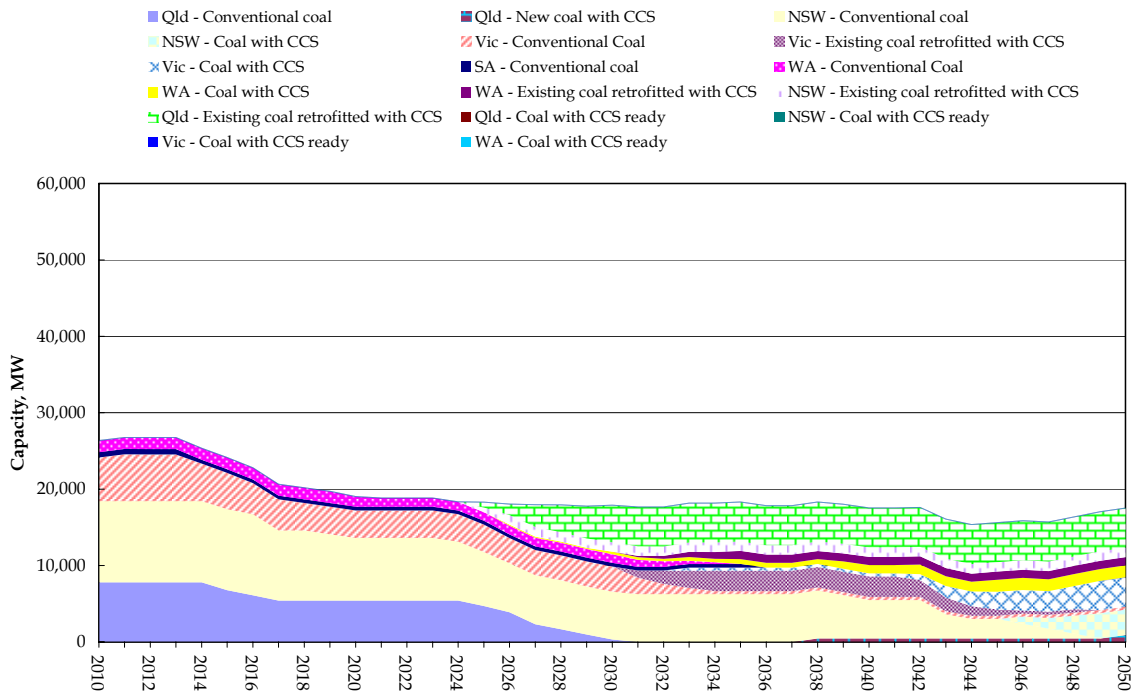


Figure 4-7: Natural gas capacity, Garnaut -25

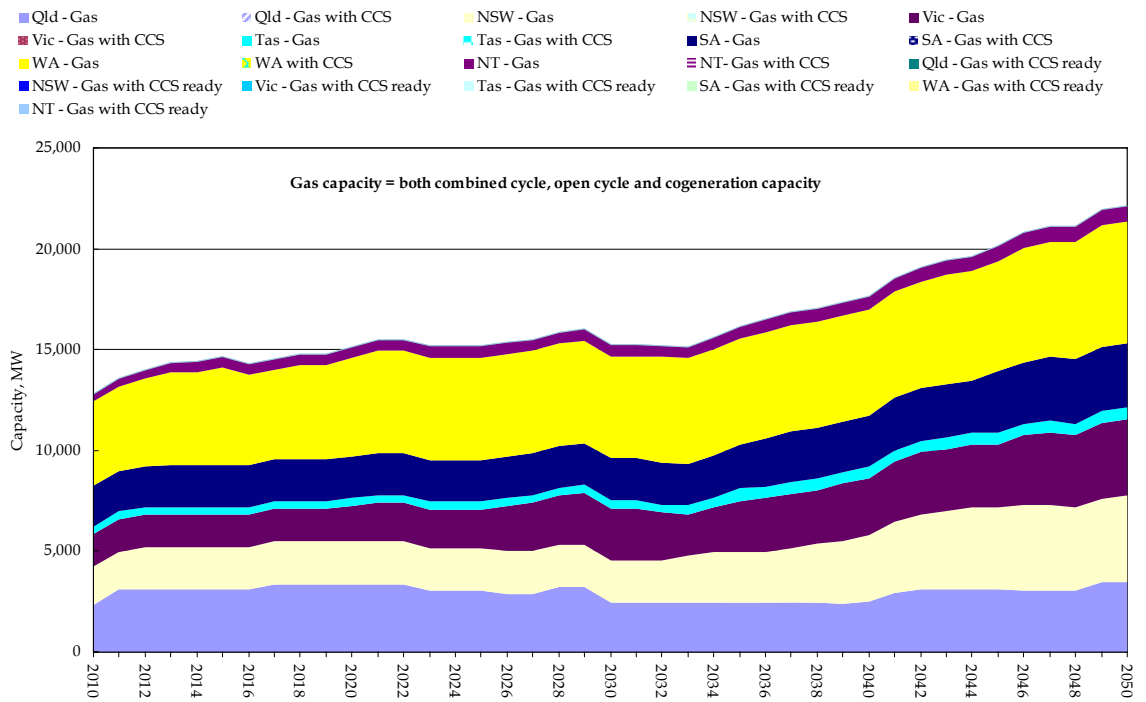


Figure 4-8: Renewable capacity, Garnaut -25

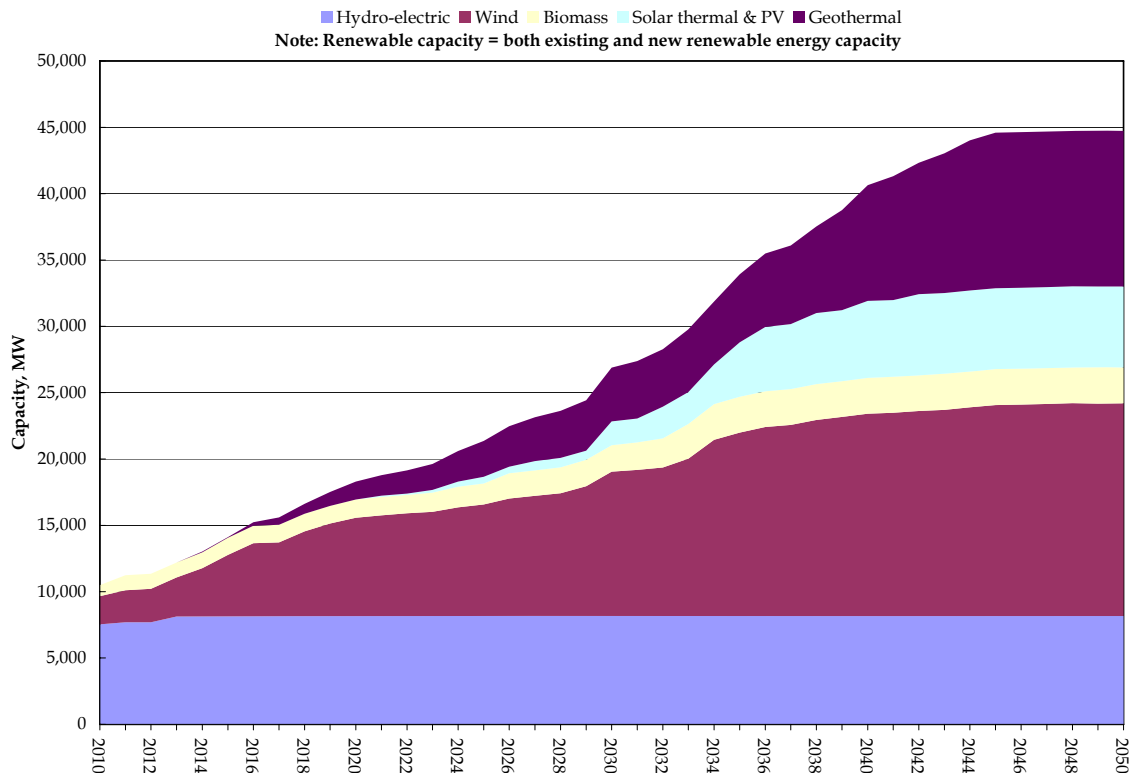
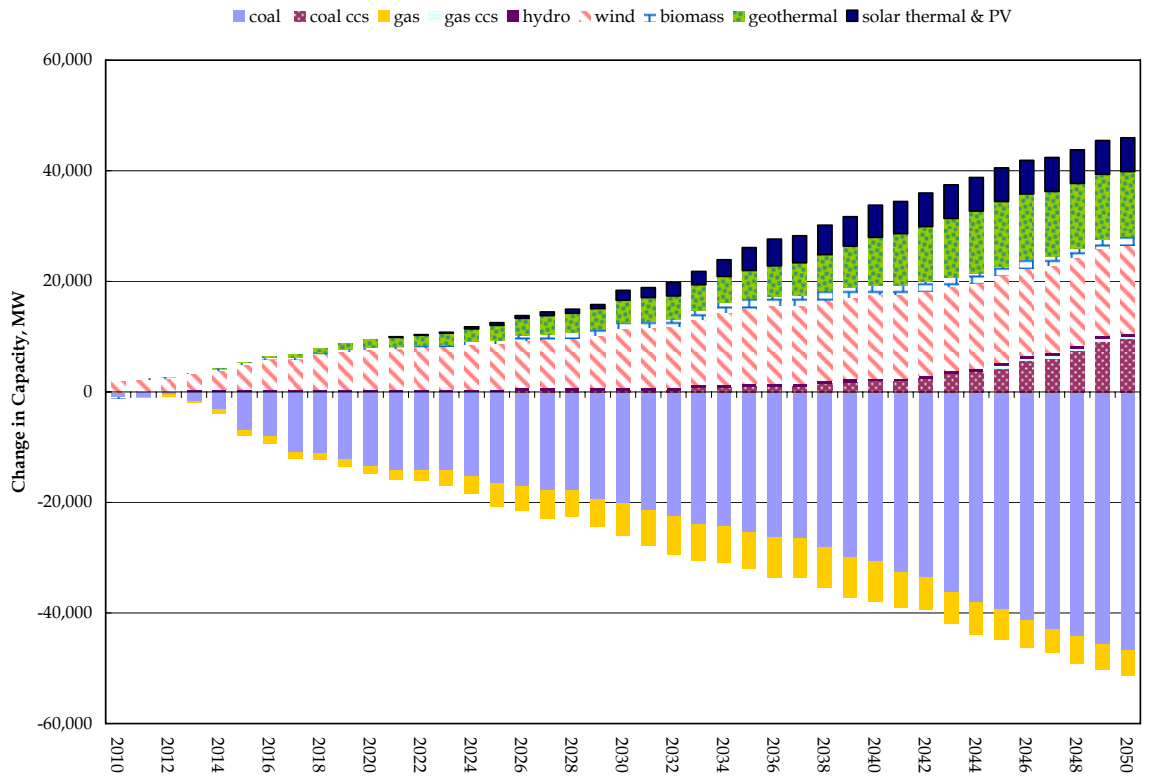


Figure 4-9: Change in capacity relative to Reference case, Garnaut -25



5 CPRS ONLY SCENARIO RESULTS

5.1 Generation

Figure 5-1: Coal generation, CPRS Only

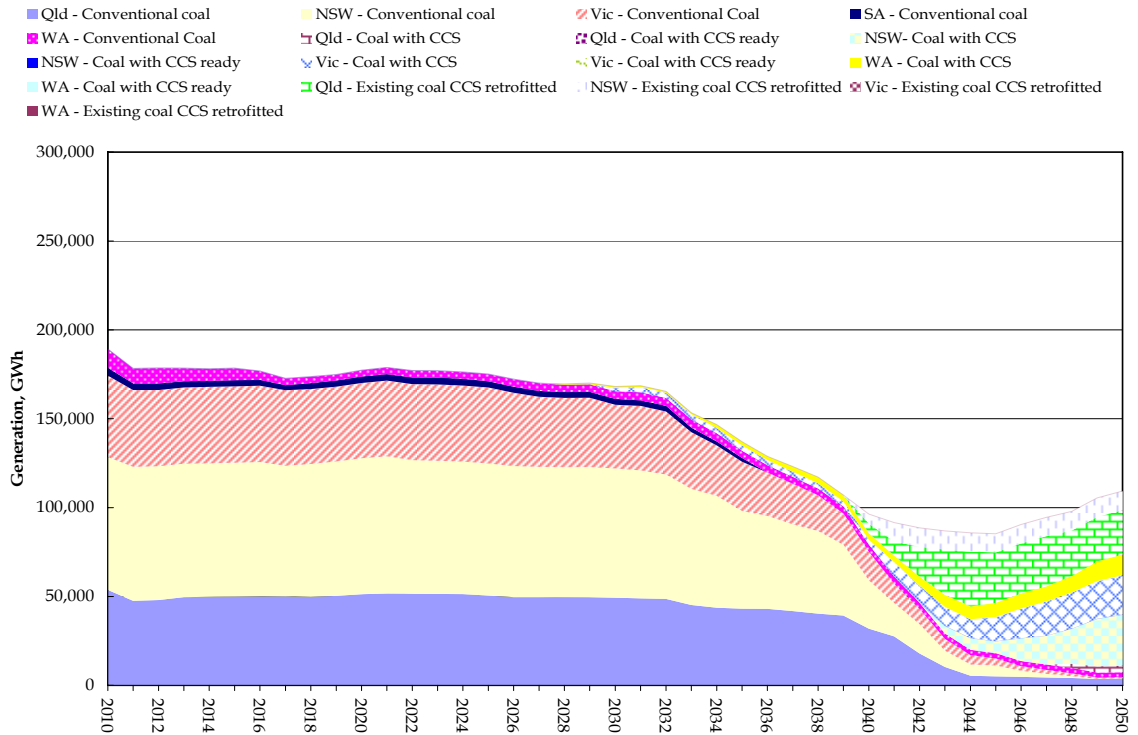


Figure 5-2: Natural gas generation, CPRS Only

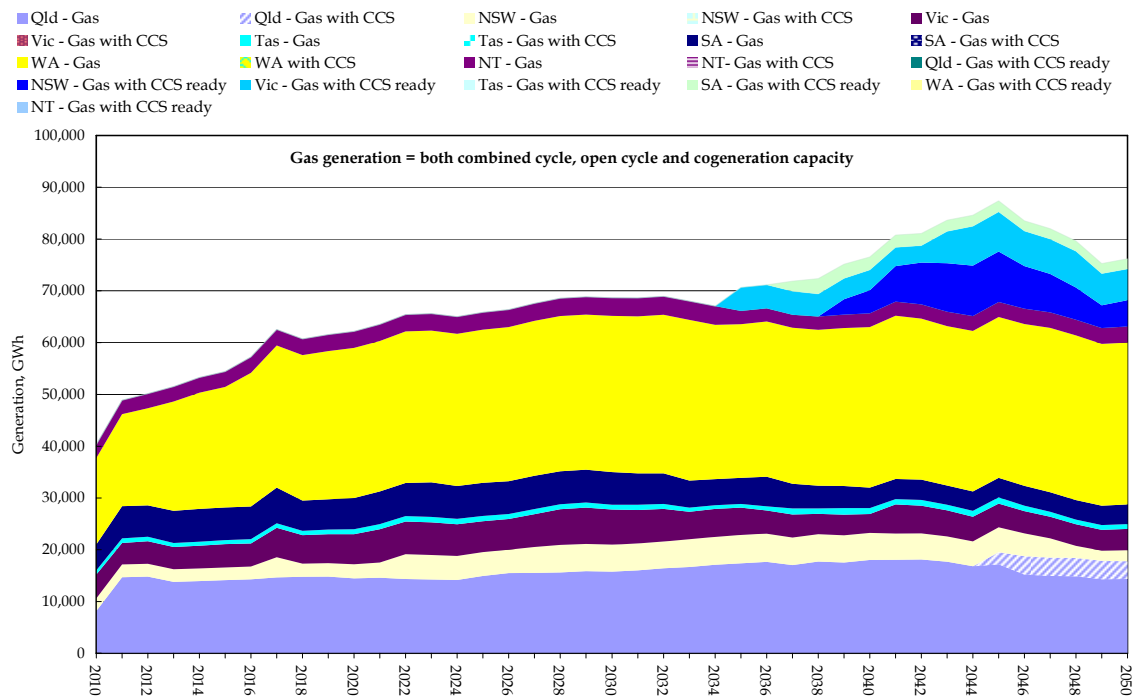


Figure 5-3: Renewable generation, CPRS Only

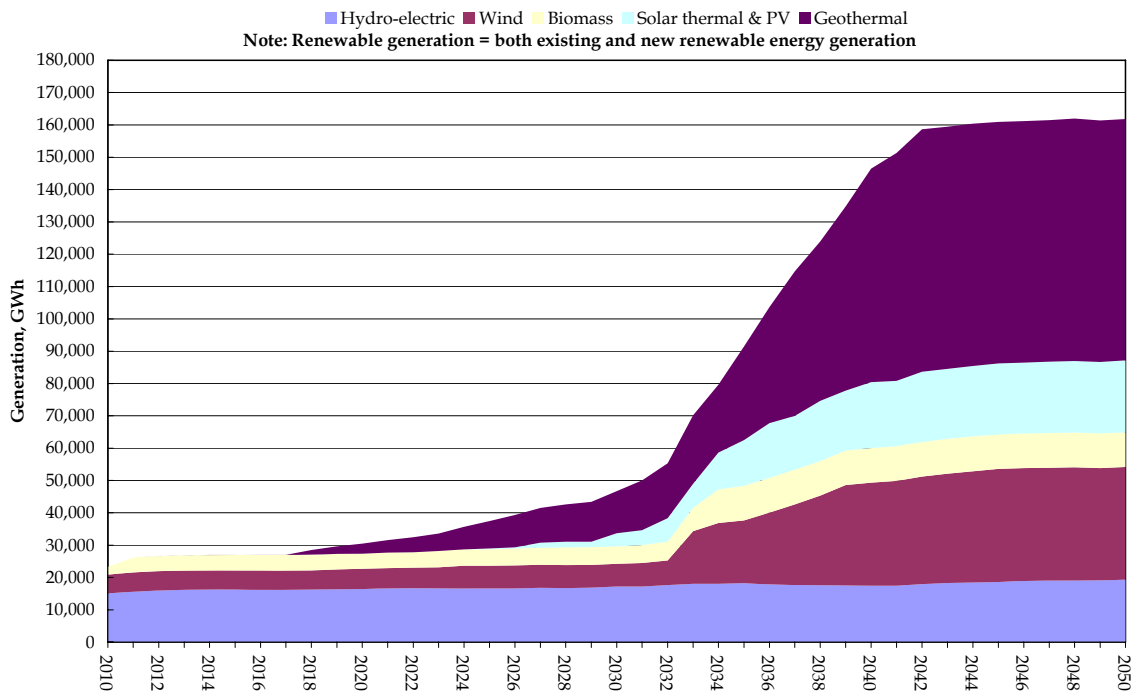


Figure 5-4: Change in generation relative to Reference case, CPRS Only

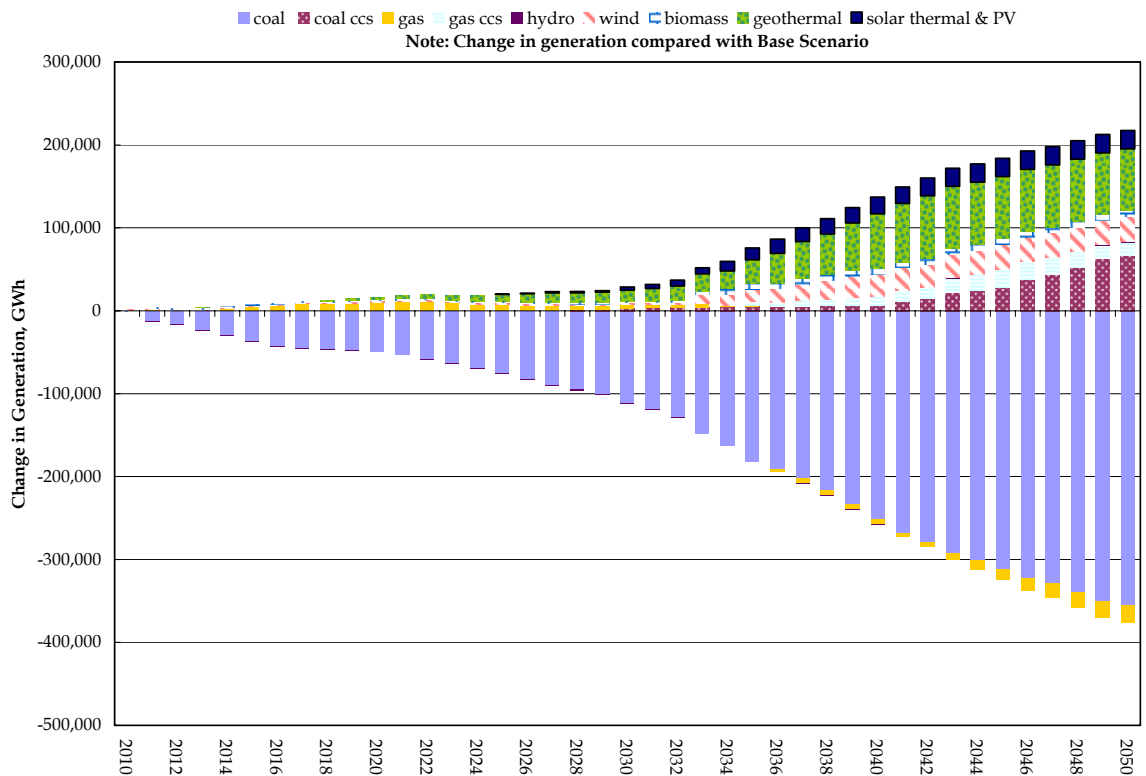
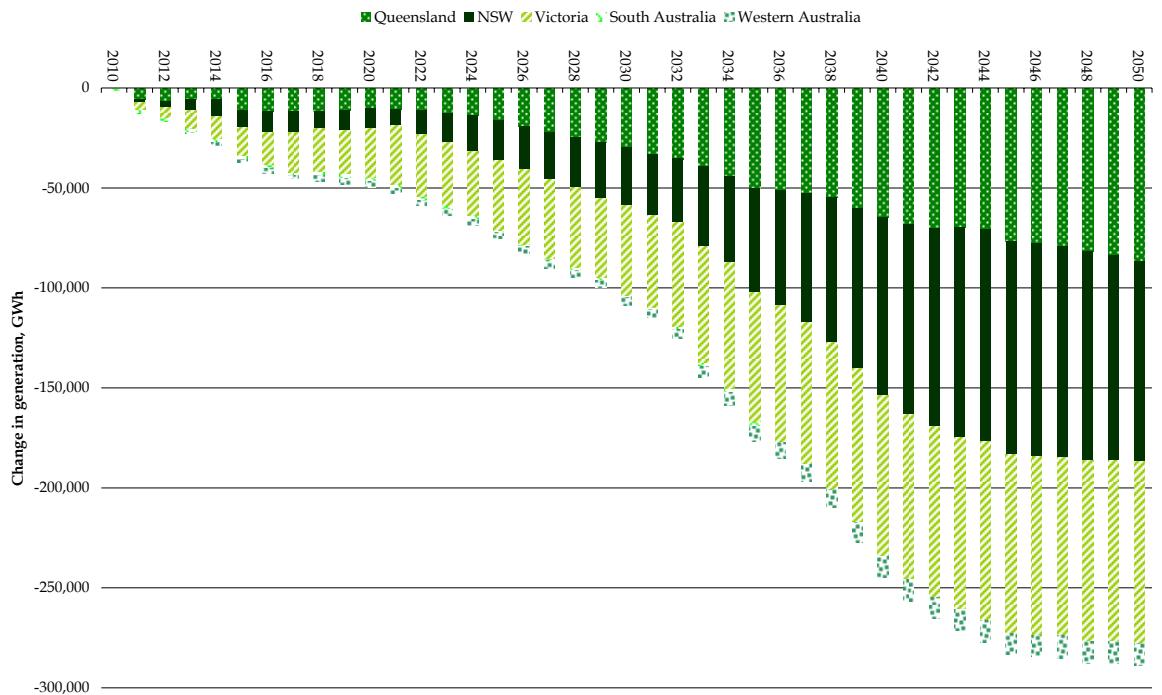


Figure 5-5: Change in coal generation by state, CPRS only



5.2 Capacity

Figure 5-6: Coal capacity, CPRS Only

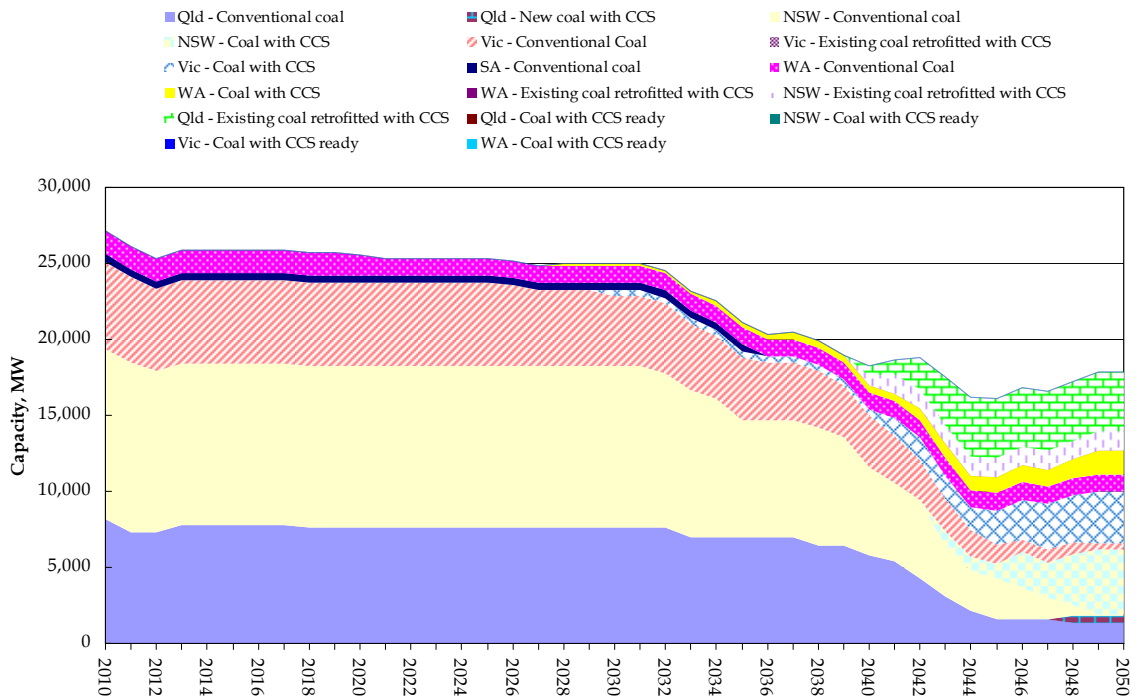


Figure 5-7: Natural gas capacity, CPRS Only

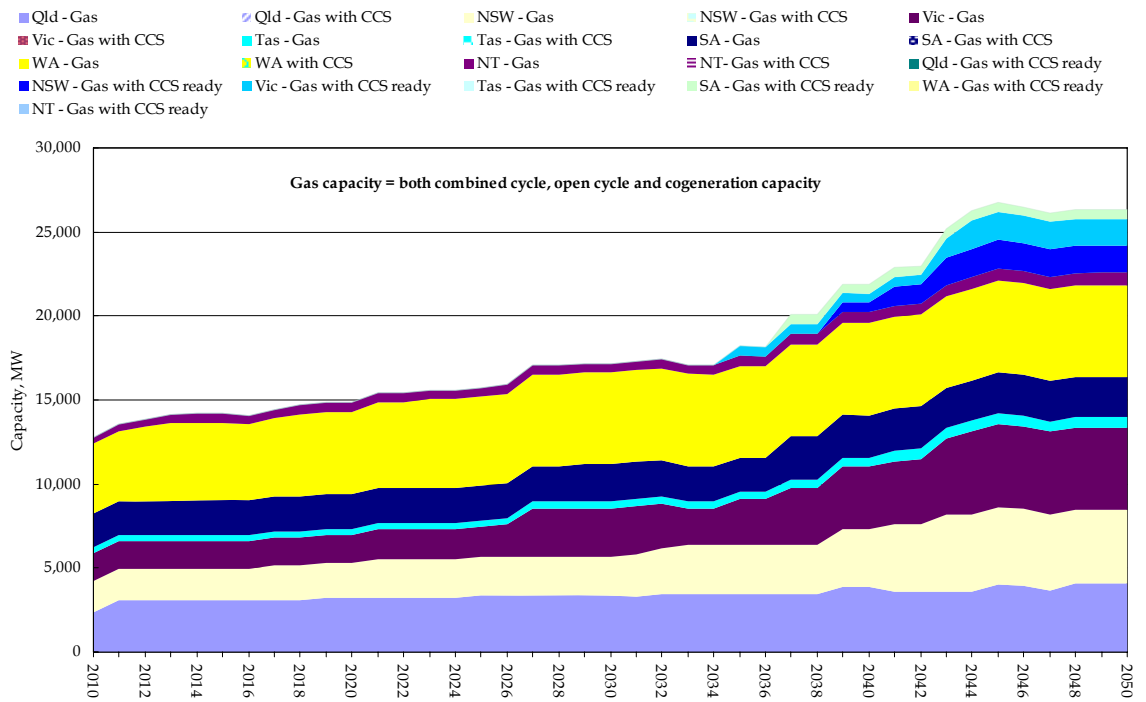


Figure 5-8: Renewable capacity, CPRS Only

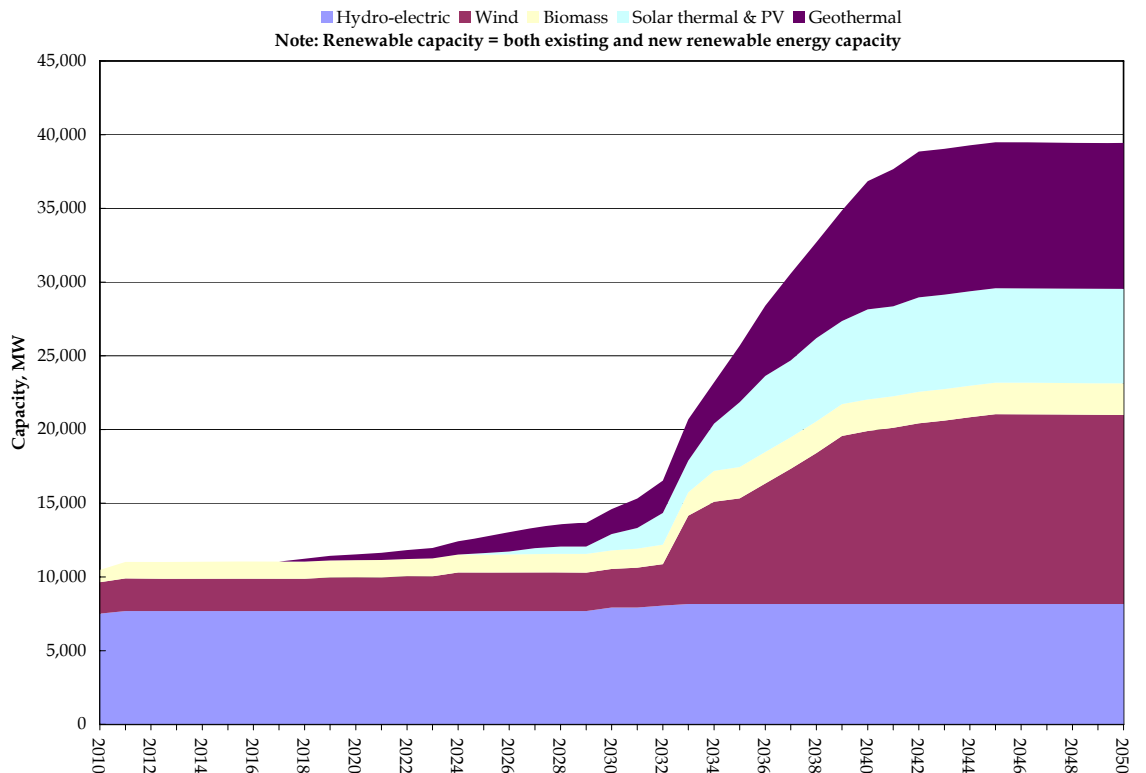
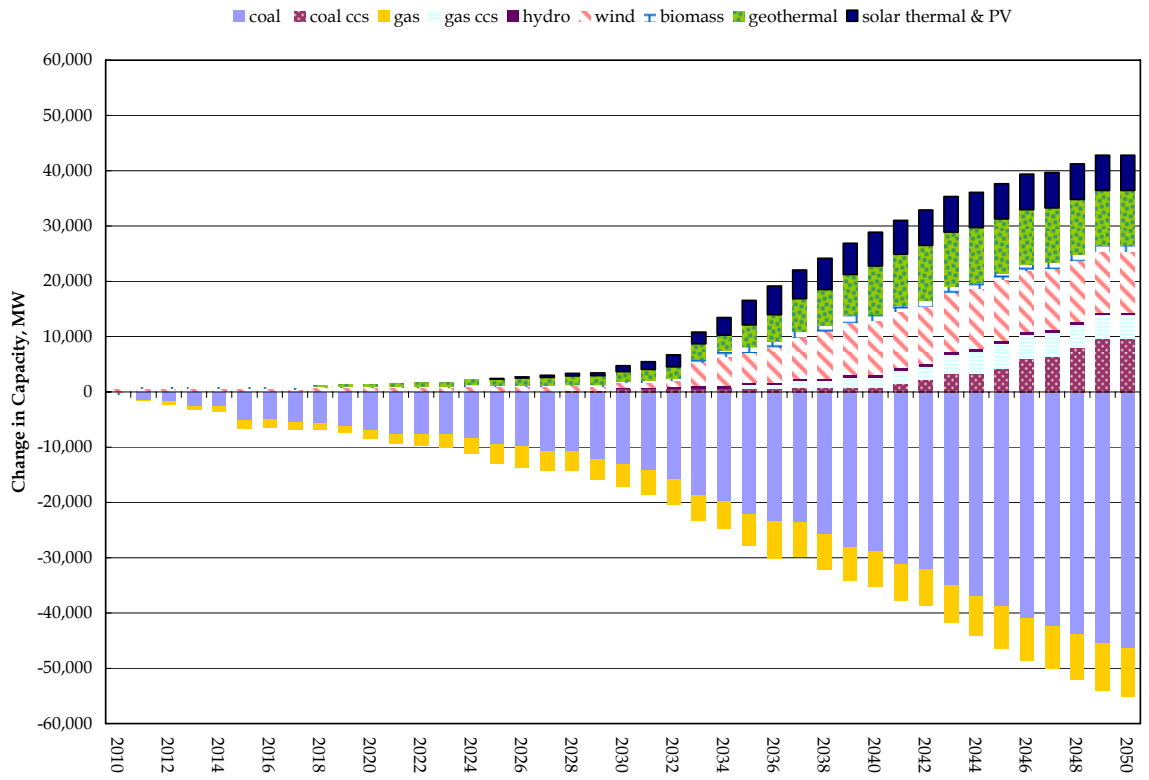


Figure 5-9: Change in capacity relative to Reference case, CPRS Only



6 CPRS -5 SCENARIO RESULTS

6.1 Generation

Figure 6-1: Coal generation, CPRS -5

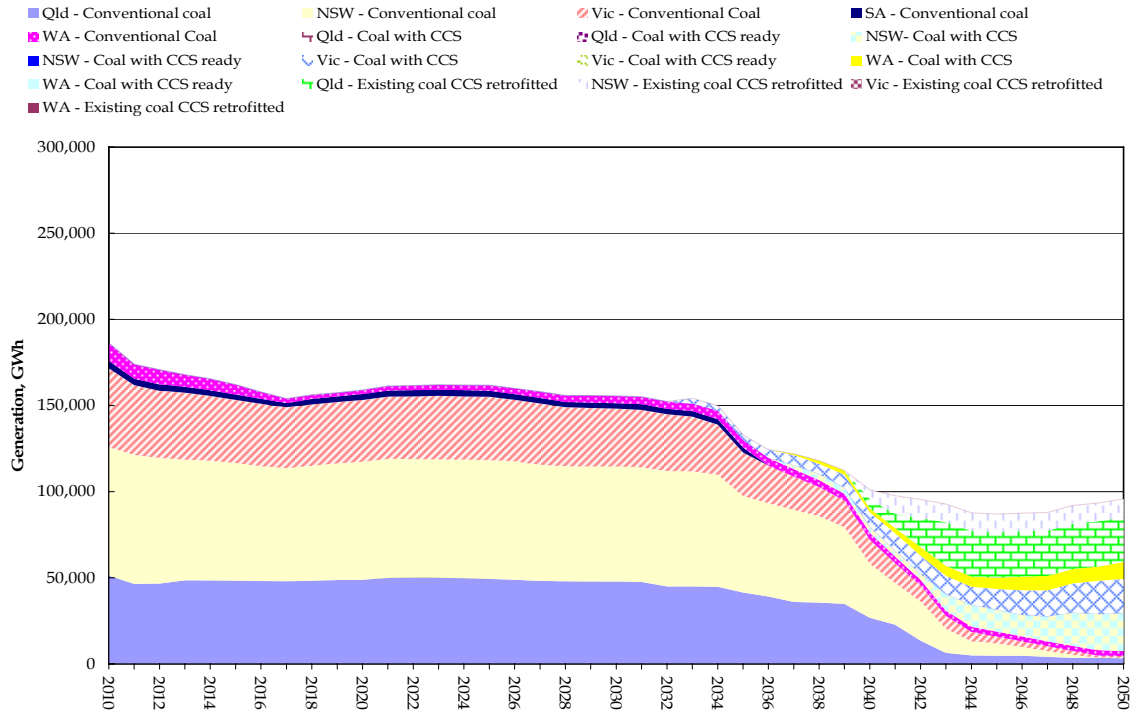


Figure 6-2: Natural gas generation, CPRS -5

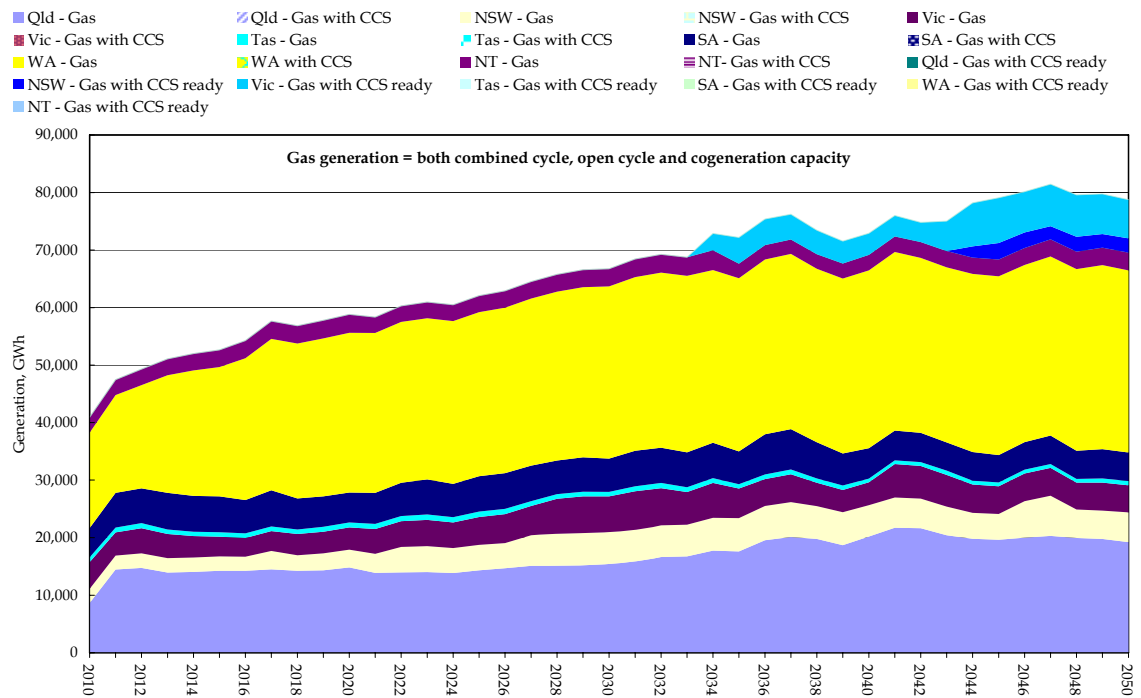


Figure 6-3: Renewable generation, CPRS -5

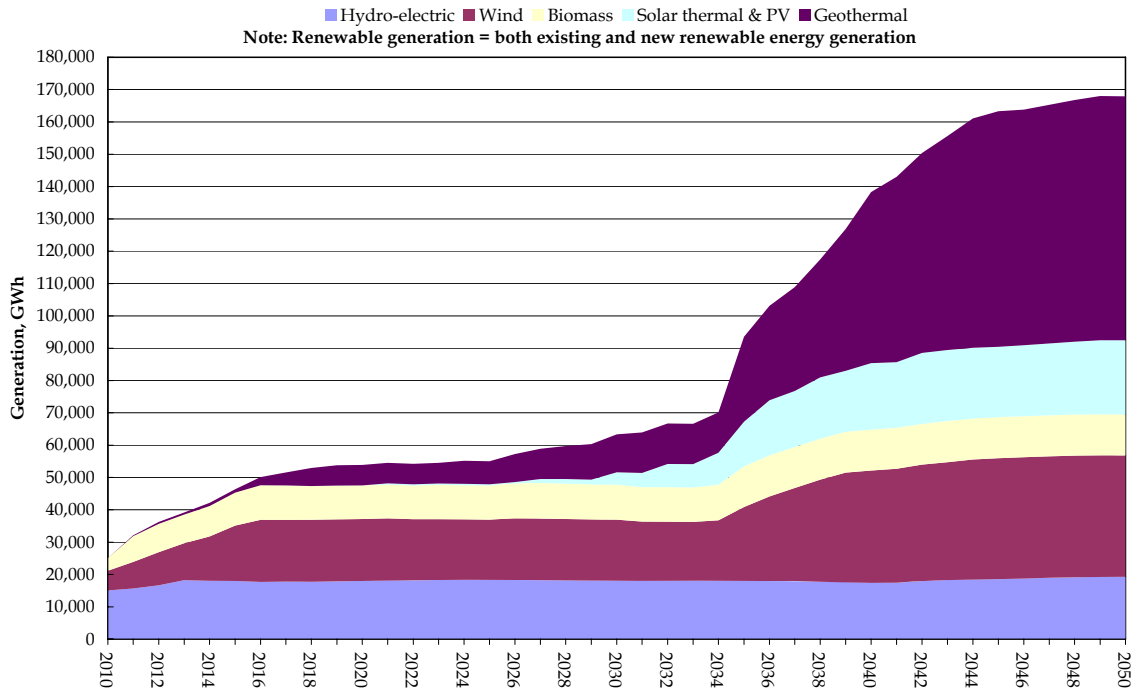


Figure 6-4: Change in generation relative to Reference case, CPRS -5

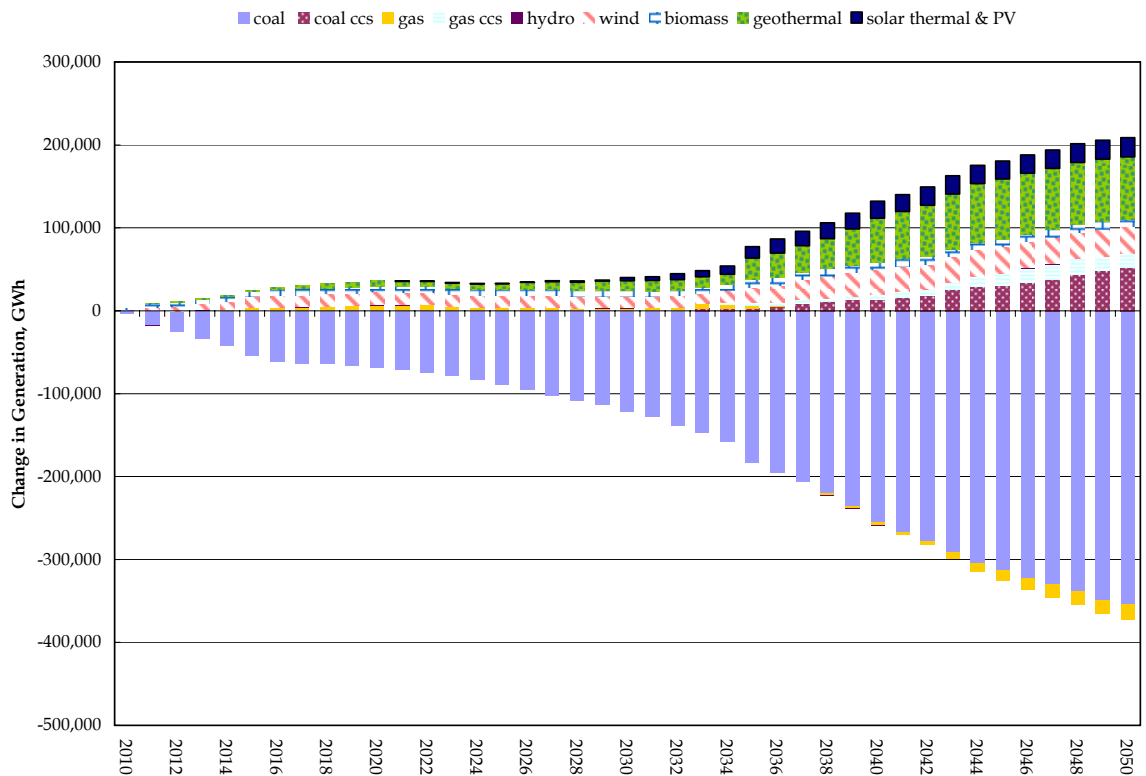
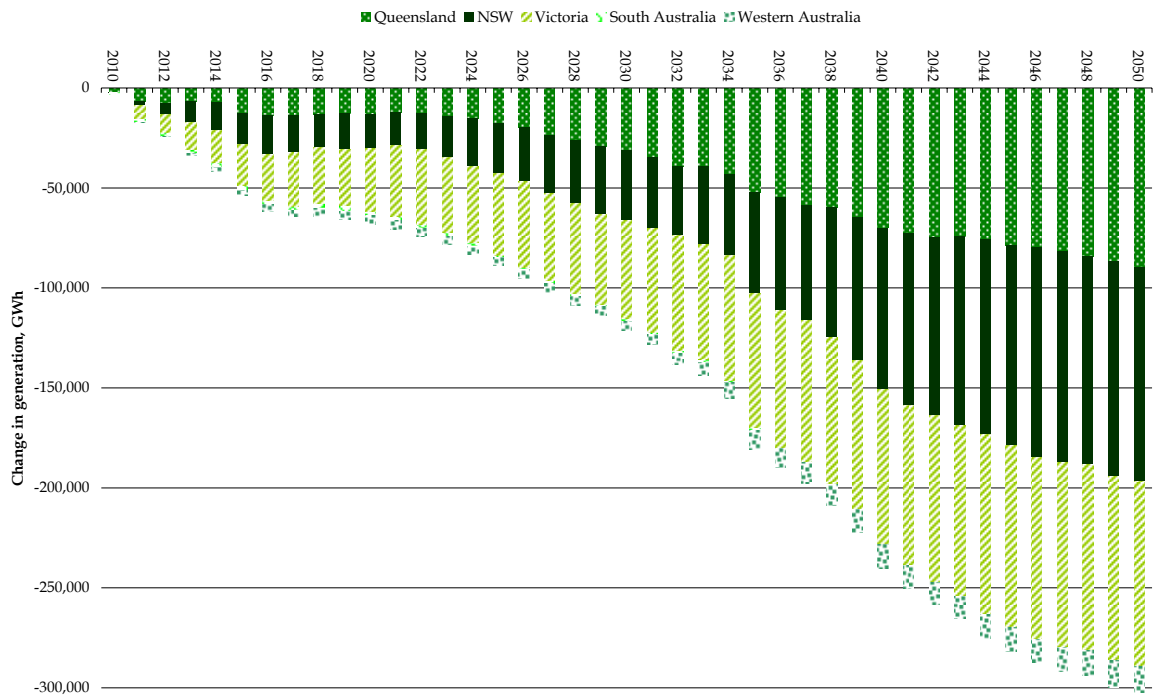


Figure 6-5: Change in coal generation by state, CPRS -5



6.2 Capacity

Figure 6-6: Coal capacity, CPRS -5

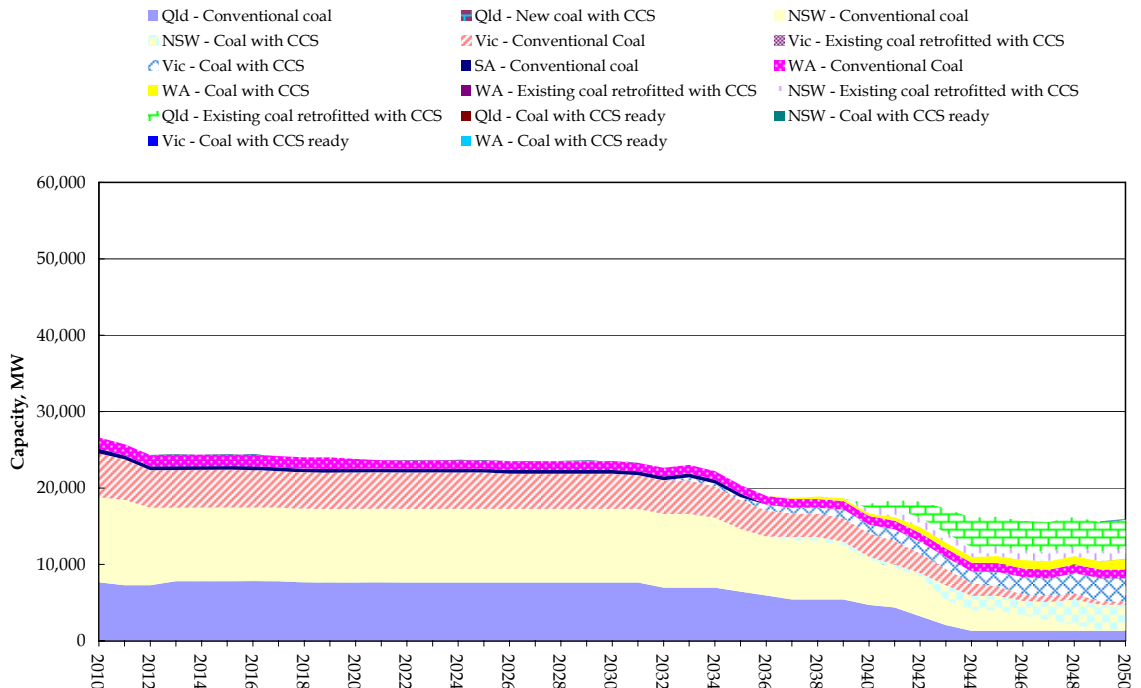


Figure 6-7: Natural gas capacity, CPRS -5

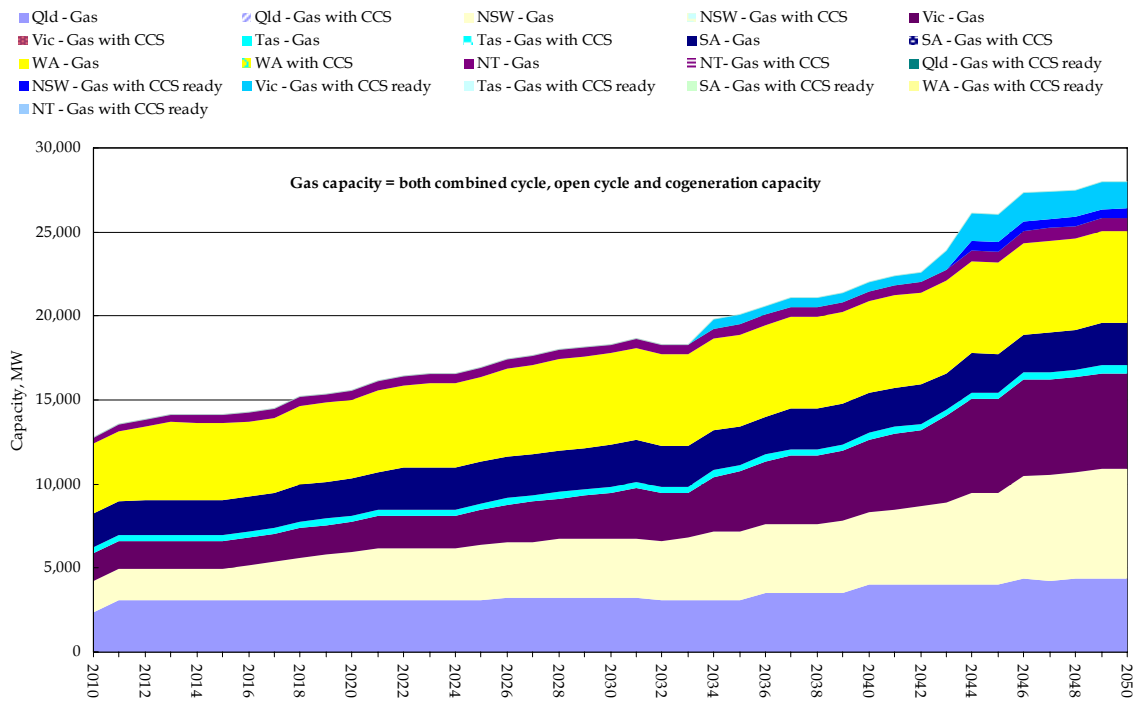


Figure 6-8: Renewable capacity, CPRS -5

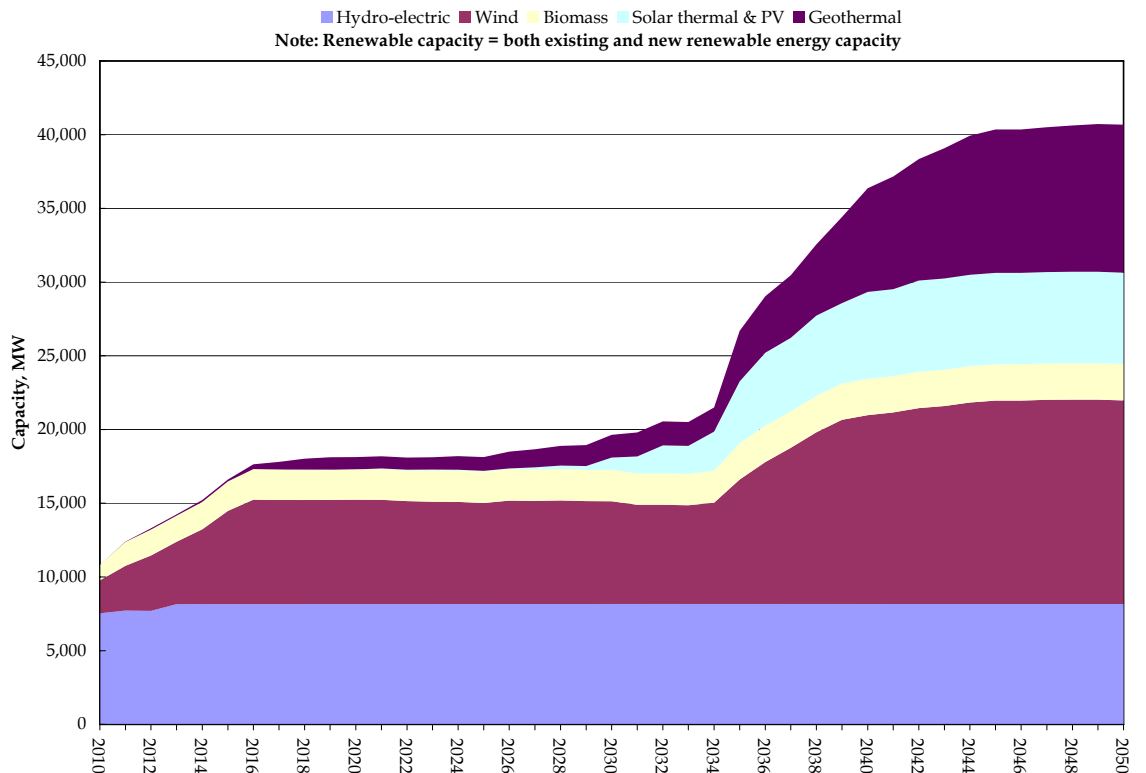
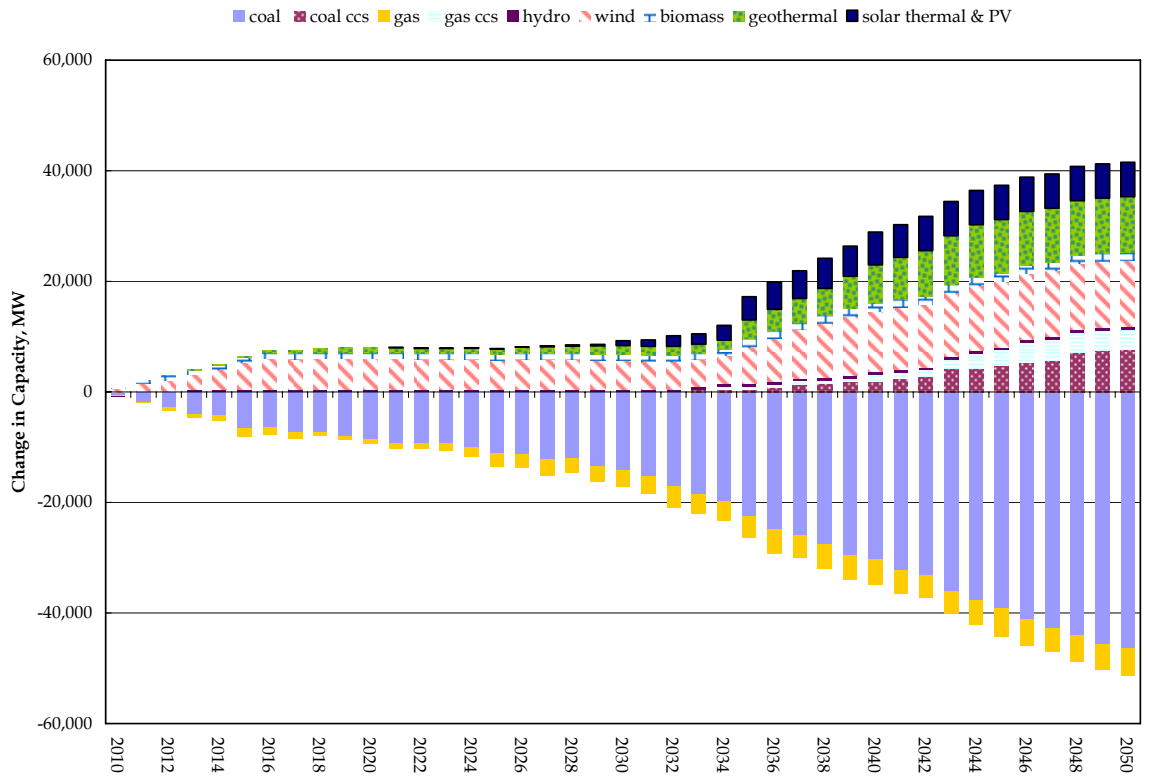


Figure 6-9: Change in capacity relative to Reference case, CPRS -5



7 CPRS -15 SCENARIO RESULTS

7.1 Generation

Figure 7-1: Coal generation, CPRS -15

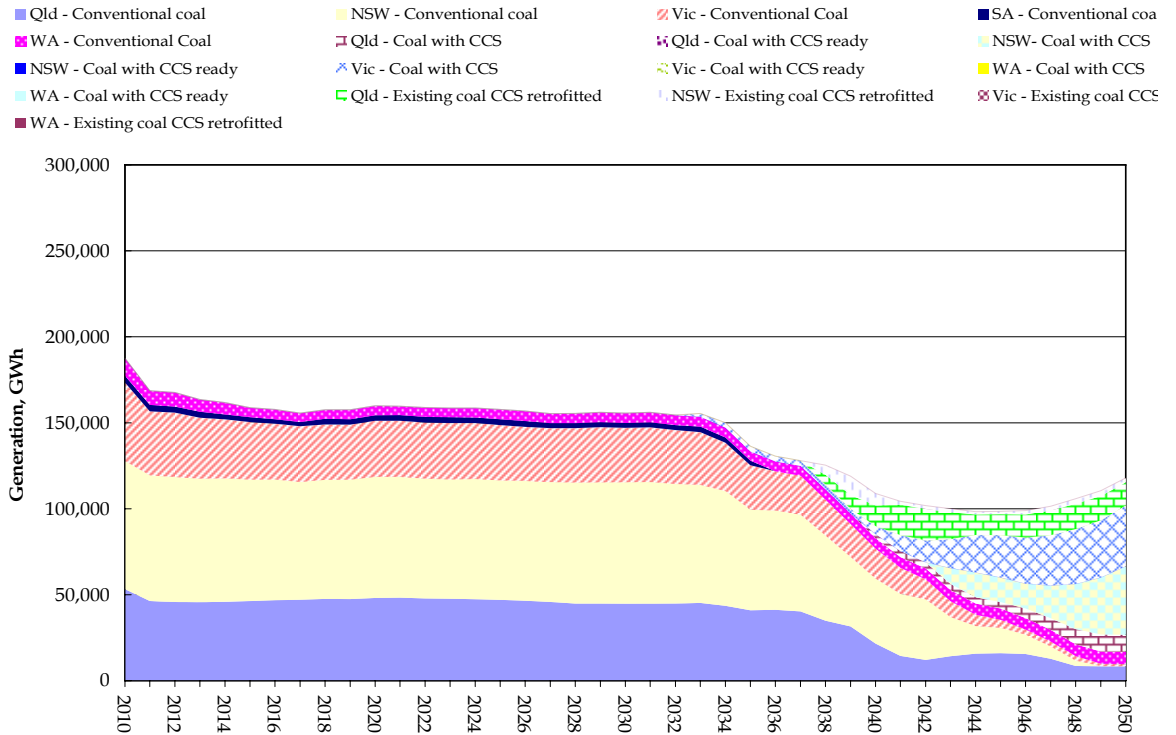


Figure 7-2: Natural gas generation, CPRS -15

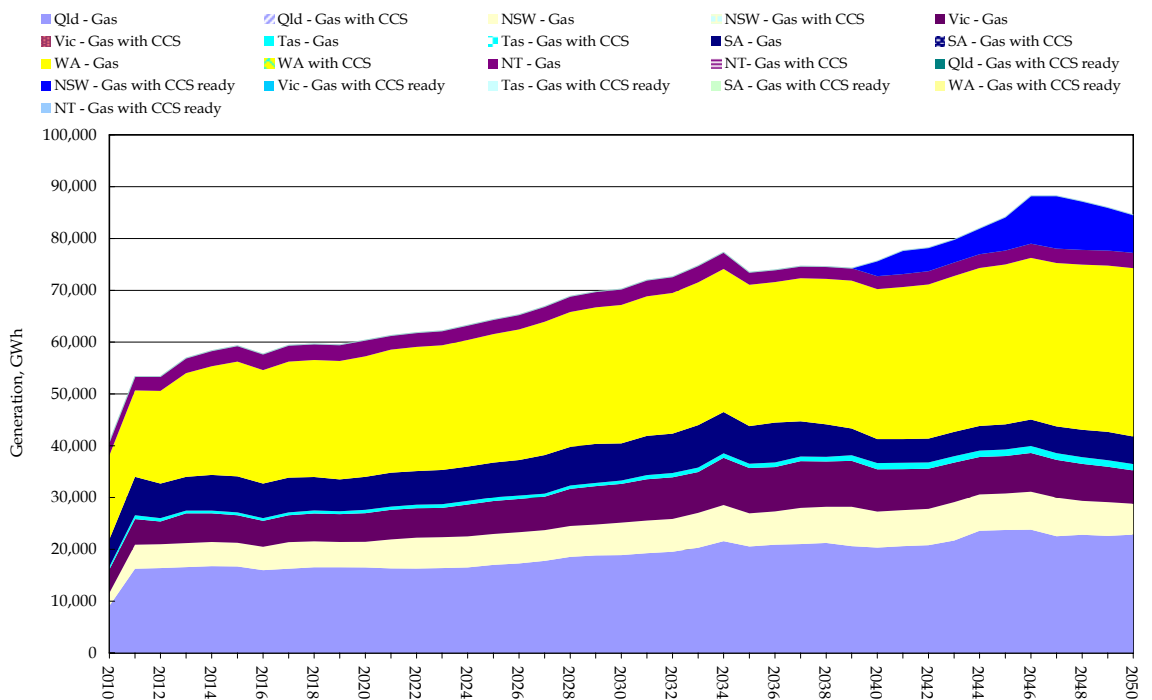


Figure 7-3: Renewable generation, CPRS -15

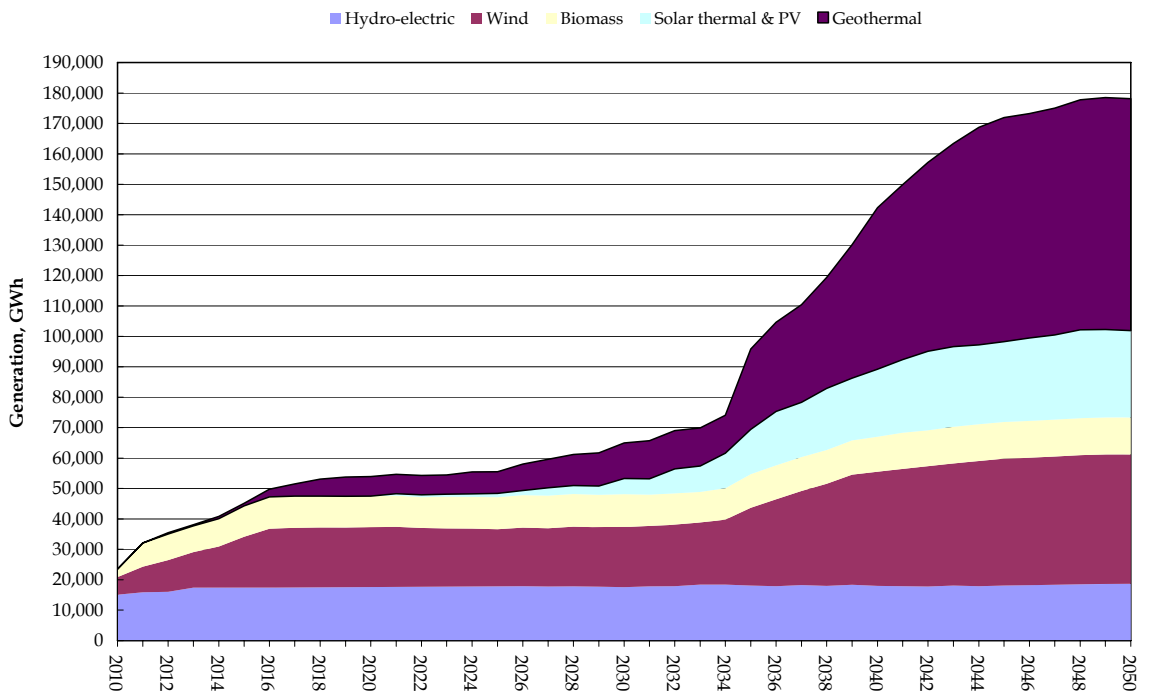


Figure 7-4: Change in generation relative to Reference case, CPRS -15

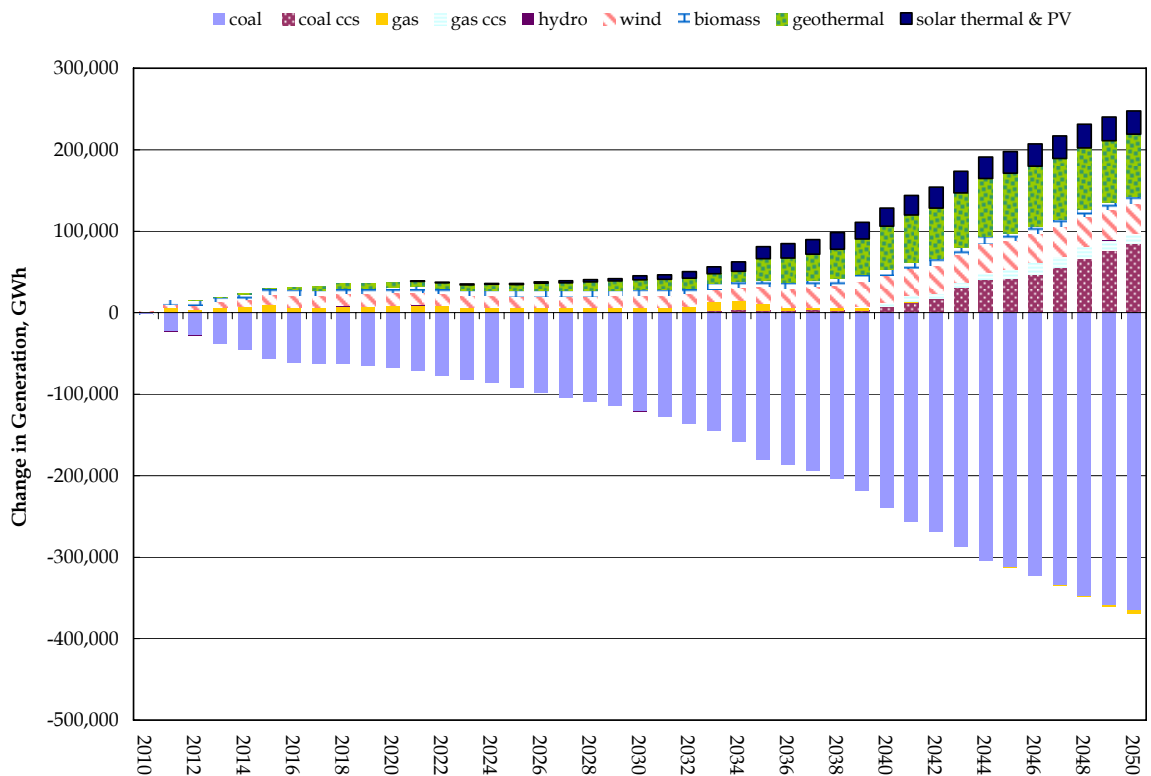
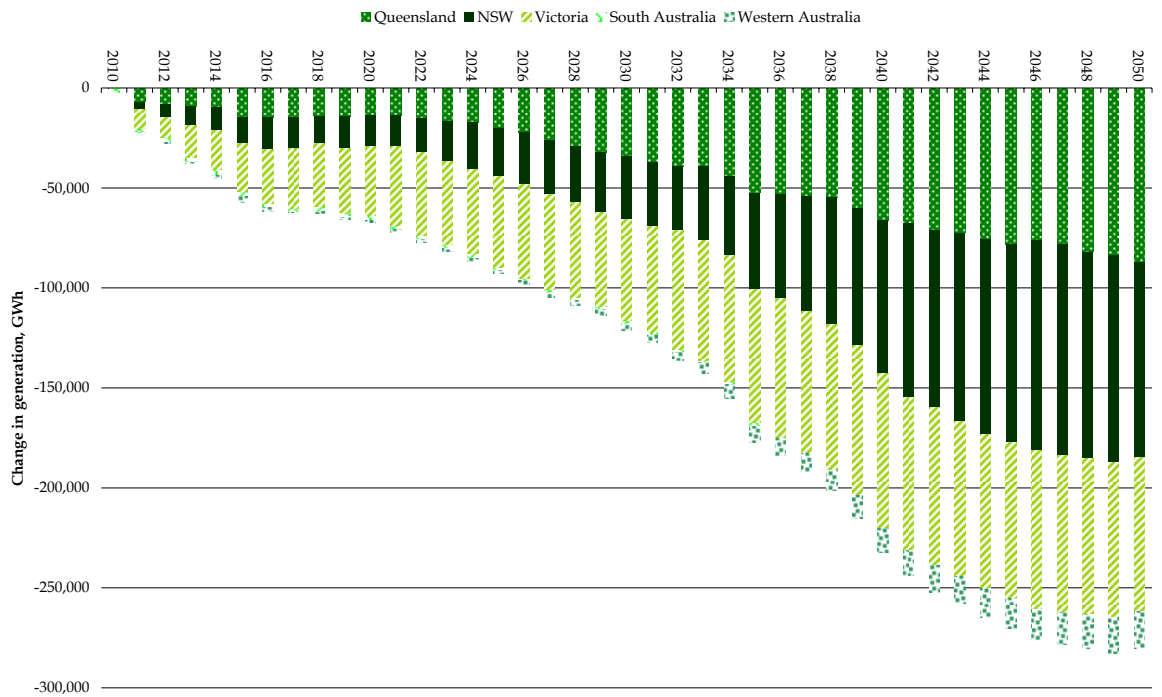


Figure 7-5: Change in coal generation by state, CPRS -15



7.2 Capacity

Figure 7-6: Coal capacity, CPRS -15

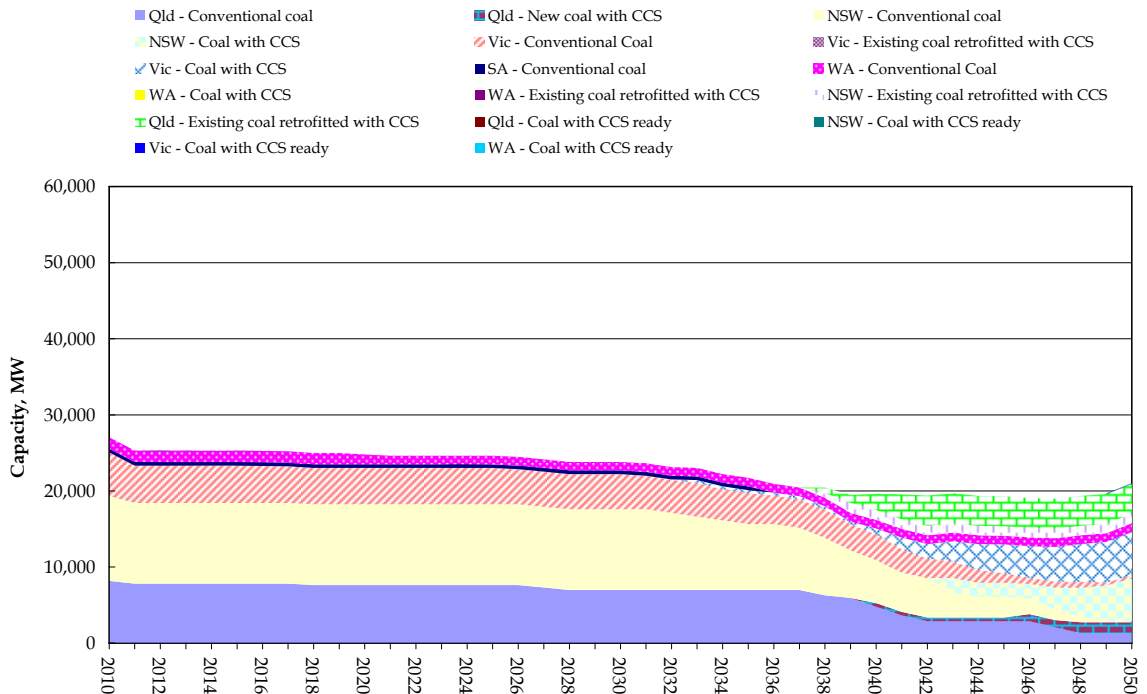


Figure 7-7: Natural gas capacity, CPRS -15

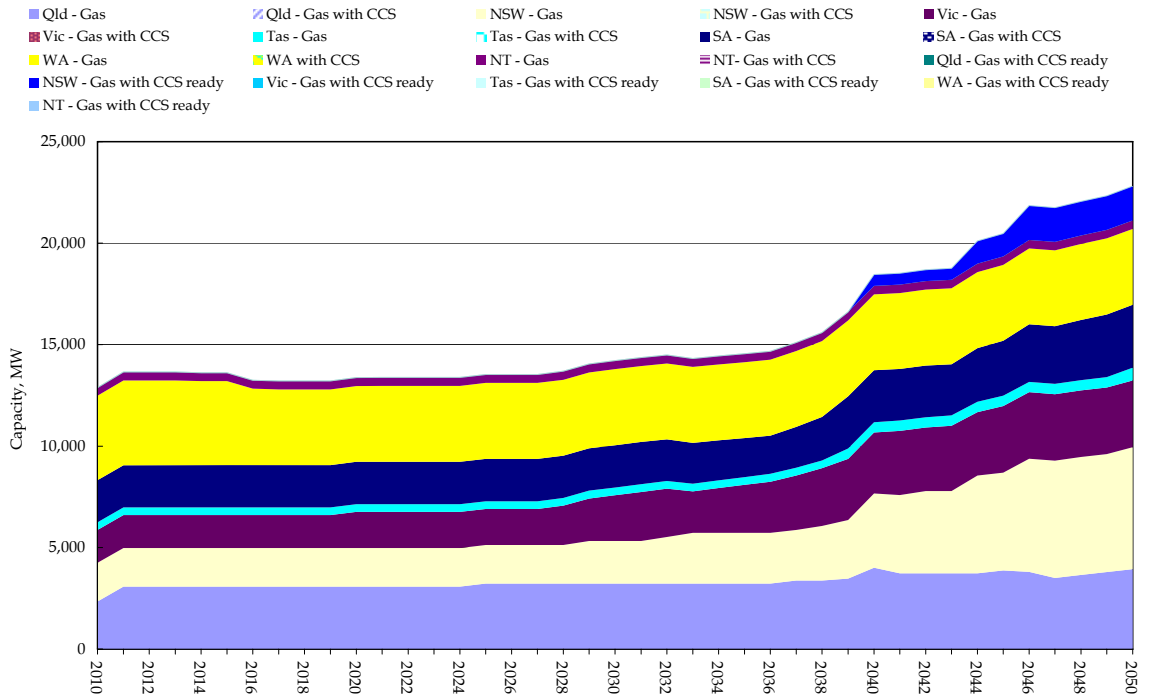


Figure 7-8: Renewable capacity, CPRS -15

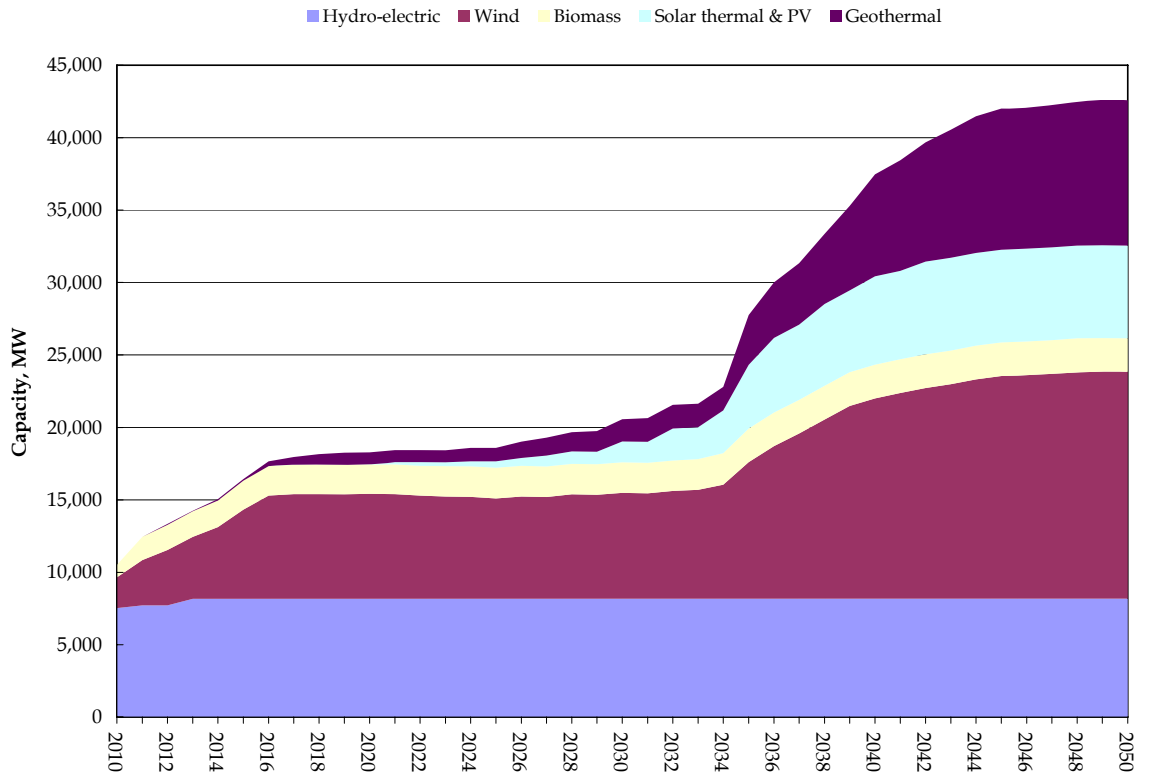


Figure 7-9: Change in capacity relative to Reference case, CPRS -15

